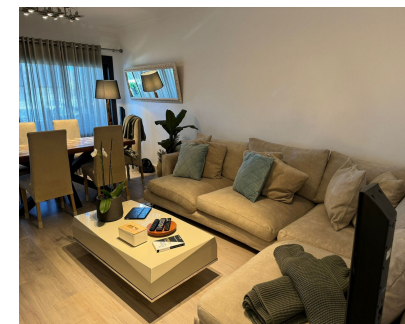
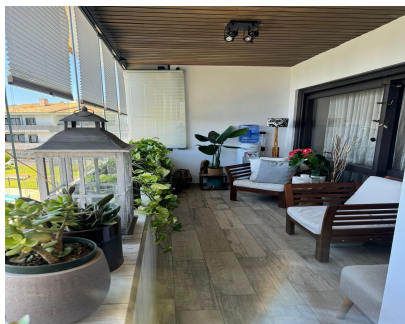


Продажа - Апартамент - Atalaya 298.000€



Ref.-ID: MIBGR4791463

Atalaya

Апартамент

Коммунальные: 1,680 EUR / год

ИБИ: 368 EUR / год

Мусор: 115 EUR / год



2



2



81 m2

New on the market! A fantastic opportunity to purchase a recently refurbished and renovated 2 bedroom, 2 bathroom penthouse apartment only a few minutes walk to the beach. Bathrooms recently refurbished and renovated just a few minutes walk to the beach. Beautiful and cosy property is Isdabe- Atalaya, beach road, very close to the sea in a quiet urbanization located in a privileged area close to supermarkets, restaurants, bus stop, schools, shops, supermarkets, restaurants, schools, schools, etc.. supermarkets, restaurants, bus stop, schools, sports centres and leisure areas. The flat is bright and spacious with plenty of storage space. It is distributed in large living-dining room and separate kitchen equipped with all appliances. Two spacious bedrooms, each with its own en-suite bathroom. Enclosed terrace with glass curtains ideal to enjoy all year round, southwest facing and overlooking the gardens of the urbanisation. Views to the gardens of the urbanisation. Outdoor communal parking right outside the front door. Great opportunity to acquire a flat that combines the proximity to the sea with the tranquillity of a gated urbanisation, with all services and amenities. Urbanization, with all the services at hand and very well communicated. Community: 140€/month water included

Расположение

- ✓ Коммерческая зона
- ✓ На побережье
- ✓ Рядом с морем
- ✓ Близко к школам
- ✓ Урбанизация

Особенности

- ✓ Крытая терраса
- ✓ Встроенные шкафы
- ✓ Рядом с транспортом

Категория

- ✓ Перепродажа

ОРИЕНТАЦИЯ

- ✓ Юг
- ✓ Юго-запад

Мебель

- ✓ Без мебели

Состояние

- ✓ Отличное
- ✓ Недавно отремонтированная

Кухня

- ✓ Полностью оборудованная

бассейн

- ✓ Общий

Сад

- ✓ Общественный

Климат-контроль

- ✓ Кондиционер

меры безопасности

- ✓ Огражденный комплекс

ВИД

- ✓ Сад
- ✓ Бассейн

Парковка

- ✓ Общая