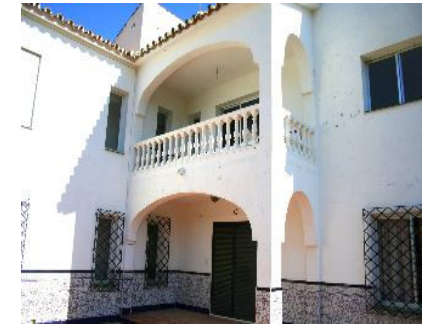


Продажа - Коммерческая - Coín  
**1.900.000€**

[www.mibgroup.es](http://www.mibgroup.es)  
 +34 661 89 71 88  
[info@mibgroup.es](mailto:info@mibgroup.es)



Ref.-ID: MIBGR2322323

Coín

Коммерческая



6



2



893 m2



75000 m2

EQUESTRIAN Centre . Loads of POTENTIAL . Excellent communication links . Close to the popular town of Coín . Close to many TAPAS Bars . Walking distance to local bar-restaurant . EXPERIENCE THE CULTURE AND LIFESTYLE of the Guadalhorce Valley Exclusive equestrian property with excellent communication links. Located only a few minutes from the centre of Coín and 30 minutes from Malaga and Marbella. The plot of 70,000m<sup>2</sup> is fully fenced, the house has its own well and water deposit. Picadero 600m<sup>2</sup> warehouse Large house of 300m<sup>2</sup> Workshop 300m<sup>2</sup> Stabling for 10 horses The house does require renovating but it would make a perfect equestrian centre or rural hotel. 30 minutes drive to Marbella 35 minutes to Malaga Airport

**Расположение**

✓ Загородный

**Состояние**

✓ Среднее

**ВИД**

✓ Горы

✓ Сельская местность

**Особенности**

✓ Крытая терраса

✓ Встроенные шкафы

✓ Апартаменты для гостей

✓ Доступ для инвалидов

✓ Барбекю

**Мебель**

✓ Без мебели

**Кухня**

✓ Частично оборудованная

**Сад**

✓ Приватный

**Парковка**

✓ Приватная

**Категория**

✓ Перепродажа