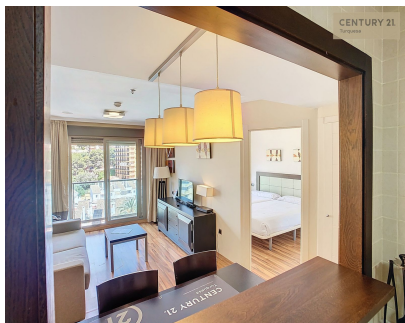


Продажа - Апартамент - Torrequebrada  
420.000€

www.mibgroup.es  
+34 661 89 71 88  
info@mibgroup.es



Ref.-ID: MIBGR4744618

Torrequebrada

Апартамент



2



1



127 m2

We present this magnificent 127 square meter penthouse, located on the seventh floor of the Pierre & Vacances building in Benalmádena, connected to one of the main avenues of Benalmádena's coast. This exclusive space offers a unique living experience, with unobstructed views that allow you to enjoy stunning city and mountain panoramas. The penthouse features 2 spacious and bright bedrooms, perfect for creating a personal retreat. The fully equipped bathroom stands out for its modern and functional design. The property offers a large living-dining room, ideal for entertaining guests and enjoying unforgettable moments. The kitchen has a window that opens to the living room, providing a sense of harmony and space. The true charm of this penthouse lies in its private terrace, an oasis of tranquility in the heart of the city. With enough space to create an outdoor living area, an outdoor dining area, or a relaxation area, this terrace is the perfect place to enjoy sunsets and fresh air. Located just a few meters from the beach and close to dining establishments, this penthouse combines tranquility with the convenience of being close to all amenities: shops, restaurants, public transportation, and the beach. Key Features: Area: 127 m<sup>2</sup> Floor: Seventh Bedrooms: 2 Bathrooms: 1 Unobstructed views Private terrace Equipped kitchen Building with elevator Location: Torrequibrada, Benalmádena Close to dining establishments and just a few meters from the beach Don't miss the opportunity to live in this stunning penthouse that combines luxury, comfort, and exceptional views. Contact us for more information and to schedule a visit!

**ОРИЕНТАЦИЯ**

✓ Север

**Состояние**

✓ Хорошее

**бассейн**

✓ Общий

**Климат-контроль**

✓ Кондиционер

**Особенности**

- ✓ Лифт
- ✓ Приватная терраса
- ✓ Кладовка

**Парковка**

✓ Гараж