

## Продажа - Участок - Coín

# 95.000€

Coín

Участок

ИБИ: 98 EUR / год



676 m2

Residential plot with an informational preliminary project indicating that construction is possible on the plot, located in a popular urbanization in Coín. This south-facing plot has magnificent views of the countryside and the Mijas mountains. The plot is slightly sloped, with green areas at the front and side. The preliminary project is for a modern two-story villa of 218m<sup>2</sup> plus a basement of 129m<sup>2</sup>, featuring 4 bedrooms, 3 bathrooms, and a pool. Please contact us for more information.

### Расположение

- ✓ Рядом с магазинами
- ✓ Рядом с городом
- ✓ Урбанизация

### ОРИЕНТАЦИЯ

- ✓ Юг

### ВИД

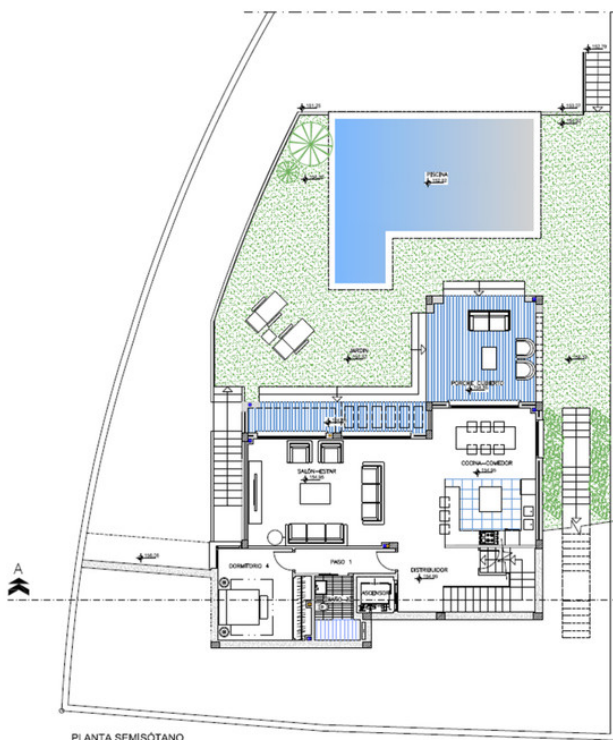
- ✓ Горы
- ✓ Сельская местность
- ✓ Город
- ✓ Улица

### Парковка

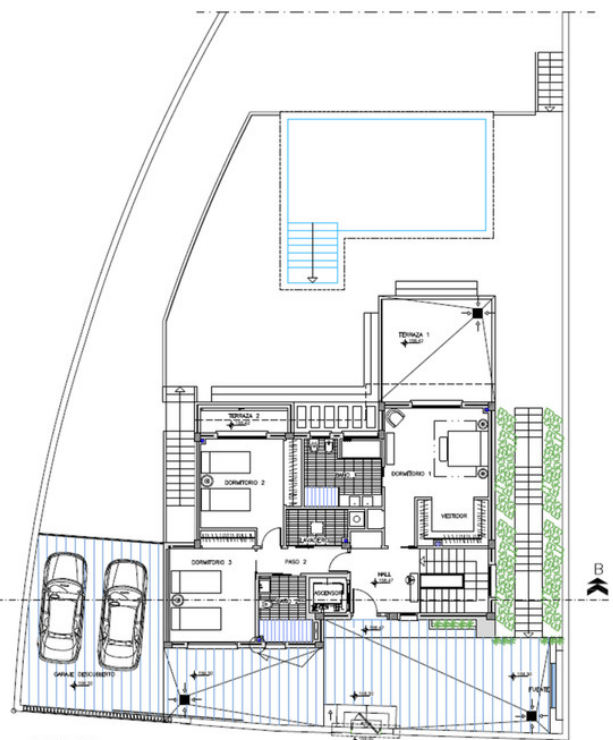
- ✓ Улица

### Категория

- ✓ Инвестиции
- ✓ Строительство не завершено
- ✓ Перепродажа
- ✓ С разрешением на строительство



PLANTA SEMISÓTANO  
DISTRIBUCIÓN



PLANTA BAJA  
DISTRIBUCIÓN

SUPERFICIES	CONSTRUIDAS	ÚTILES
<b>PLANTA SÓTANO:</b>		
TRASTERO, ESCALERA Y ASCENSOR	126.59 M <sup>2</sup>	112.07 M <sup>2</sup>
<b>PLANTA SEMISÓTANO:</b>		
VIVIENDA	108.52 M <sup>2</sup>	92.39 M <sup>2</sup>
PORCHE CUBIERTO	20.07 M <sup>2</sup>	18.55 M <sup>2</sup>
PISCINA (Lamina de agua)	40.20 m <sup>2</sup>	40.20 m <sup>2</sup>
<b>PLANTA BAJA:</b>		
VIVIENDA	108.52 M <sup>2</sup>	90.97 M <sup>2</sup>
TERRAZA DESCUBIERTA 1	20.07 M <sup>2</sup>	18.28 M <sup>2</sup>
TERRAZA DESCUBIERTA 2	5.04 M <sup>2</sup>	3.53 M <sup>2</sup>
GARAJE DESCUBIERTO	41.60 M <sup>2</sup>	36.37 M <sup>2</sup>

FECHA: SEP. 2019	ESCALA: 1/75	5 DISTRIBUCIÓN PLANTA SEMISÓTANO Y BAJA
------------------------	-----------------	---









