

## Продажа - Дом - La Cala Hills

# 970.000€

La Cala Hills

Дом



4



4



320 m2

YOUR LUXURY VILLA IN A PRIVILEGED SETTING DESIGNED TO ENJOY THE OUTDOORS. This semi-detached villa has independent infinity pools, large terraces and glazed living rooms, from ceiling to floor, so you can fully enjoy the natural light, the wonderful surroundings. 4 spacious bedrooms, 4 bathrooms, thermal flooring, high efficiency LED lighting.... . Finishes of the highest quality for you to enjoy the space and elegance, in a relaxed atmosphere. QUALITY, DESIGN AND CARE IN EVERY DETAIL Just 25 minutes from Malaga's Pablo Picasso airport or the emblematic Puerto Banús and surrounded by sports facilities, tennis, horse riding and diving clubs, as well as the golf courses of La Cala Golf, Mijas Golf, Santana, La Noria, Calanova and El Chaparral, among others. THE PERFECT COMBINATION OF LIGHT AND SPACE Forming part of a complex of 8 villas, designed with maximum energy efficiency, comfort and natural light. The communal gardens are low maintenance and Japanese in style, which fits in perfectly with the beautiful vegetation of the surroundings. LA CALA DE MIJAS Situated in an idyllic enclave, between the beach and the mountains, this picturesque village stands out for its gastronomy, its 9 golf courses and its proximity to the great cultural and leisure offer of both Marbella and Malaga. TRADITIONAL AND COSMOPOLITAN Its local and traditional essence, combined with a great tourist influence, promote the coexistence, in perfect harmony, of fairs and folklore, world cuisine, a wide range of leisure activities and international schools. Form of payment or by building avances 30,0% at signaure con the contract the rest monthly building avances 10,0% deeds-notary / with keys

### ОРИЕНТАЦИЯ

- ✓ Восток
- ✓ Юг

### Особенности

- ✓ Крытая терраса
- ✓ Приватная терраса
- ✓ Солярий

### бассейн

- ✓ Приватный

### Климат-контроль

- ✓ Кондиционер

### ВИД

- ✓ Море
- ✓ Бассейн















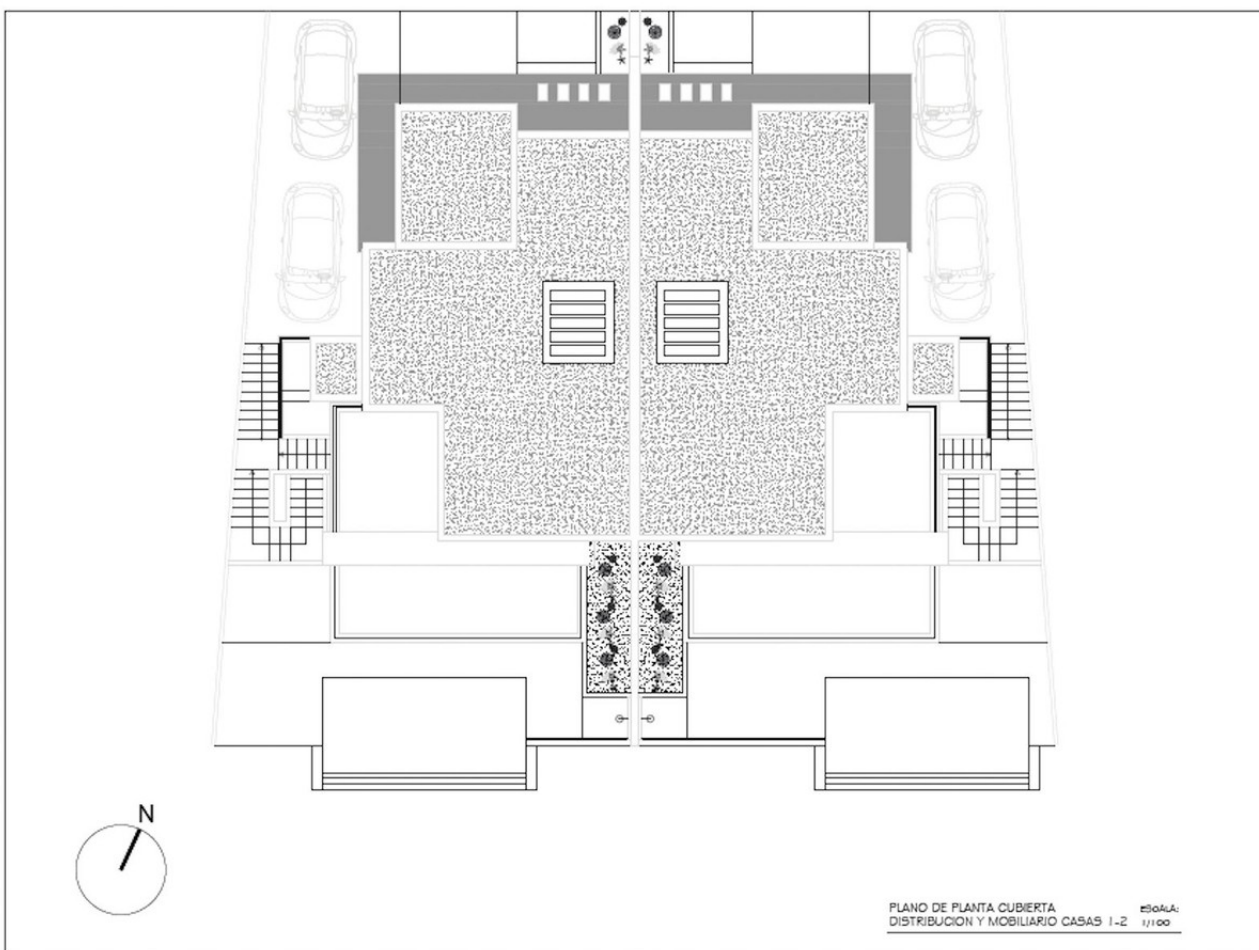


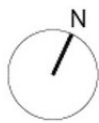
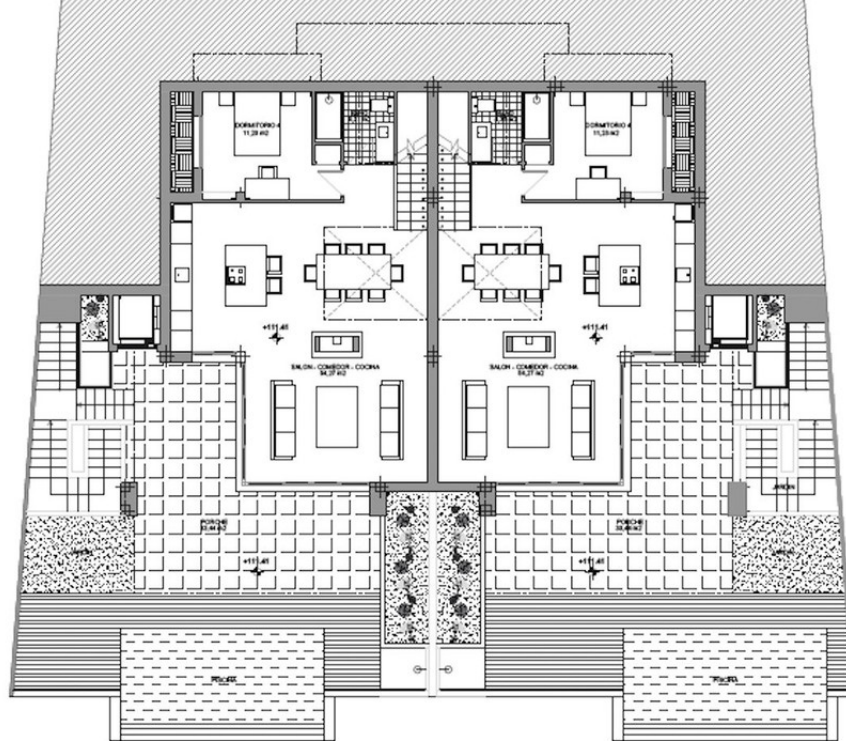






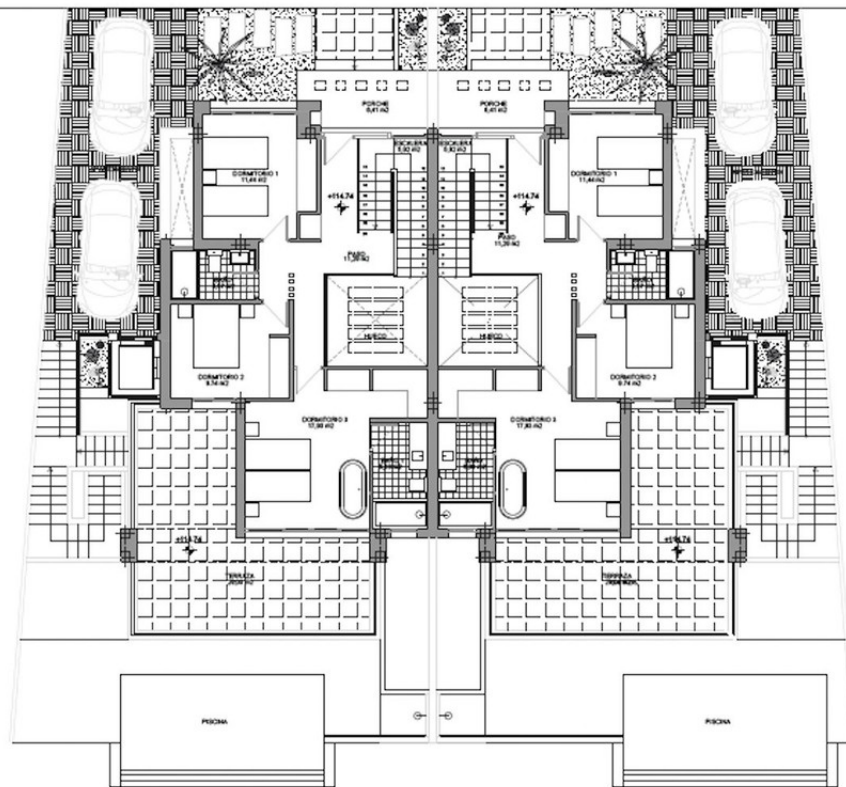






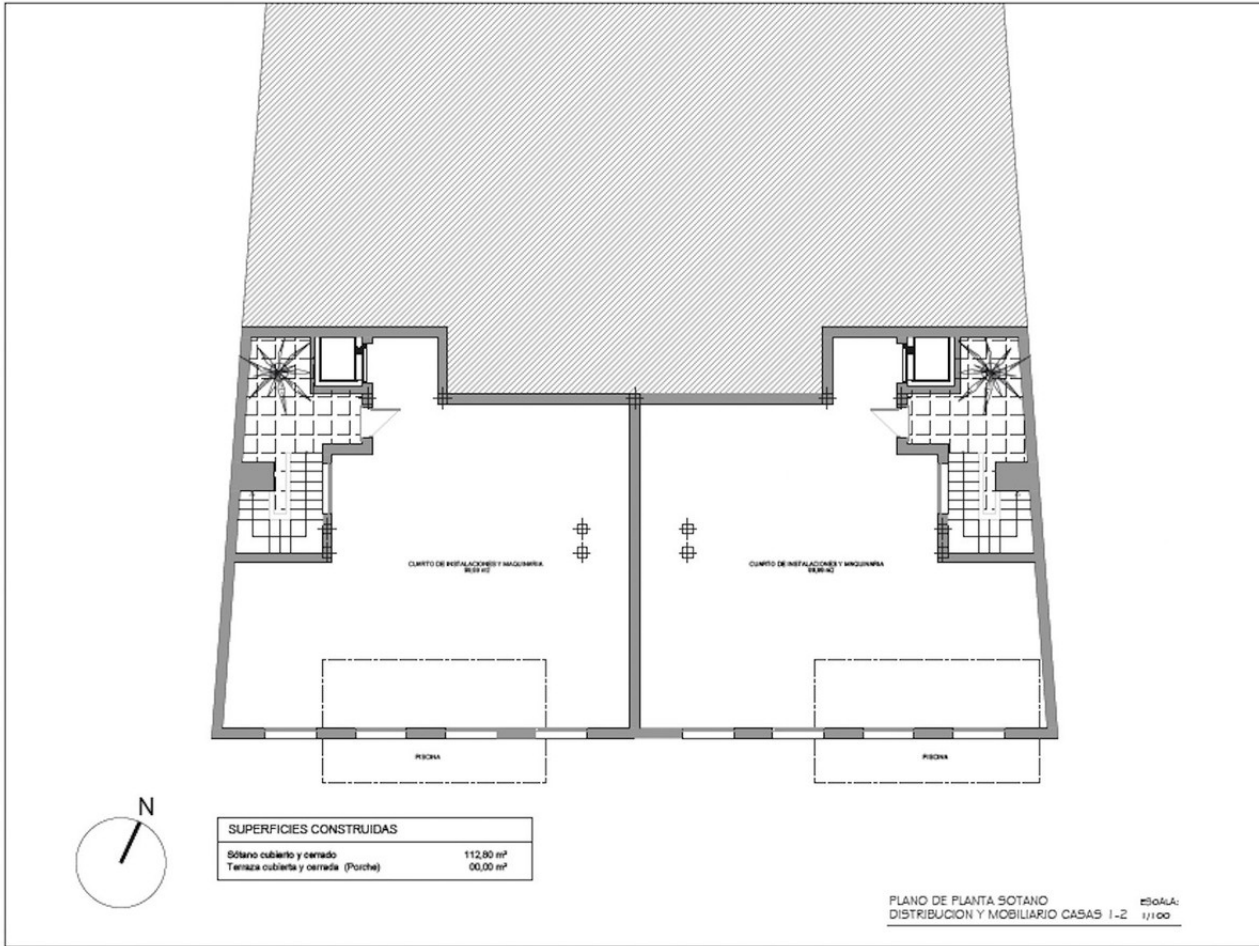
SUPERFICIES CONSTRUIDAS	
Vivienda cubierta y cerrada	81,38 m <sup>2</sup>
Terraza cubierta y cerrada (Porche)	30,75 m <sup>2</sup>

PLANO DE PLANTA BAJA  
DISTRIBUCION Y MOBILIARIO CASAS 1-2 1/100



SUPERFICIES CONSTRUIDAS	
Vivienda cubierta y cerrada	74,33 m <sup>2</sup>
Terraza cubierta y cerrada (Porche)	6,41 m <sup>2</sup>

PLANO DE PLANTA PRIMERA  
DISTRIBUCION Y MOBILIARIO CASAS 1-2 1/100



SUPERFICIES CONSTRUIDAS	
Sótano cubierto y cerrado	112,80 m <sup>2</sup>
Terraza cubierta y cerrada (Porche)	00,00 m <sup>2</sup>

PLANO DE PLANTA SOTANO  
DISTRIBUCION Y MOBILIARIO CASAS 1-2  
ESCALA: 1/100