

Продажа - Апартамент - Estepona

749.000€

Estepona

Апартамент

Коммунальные: 4,800 EUR / год

ИБИ: 1,121 EUR / год

Мусор: 98 EUR / год



4



3



200 m2

Estepona, Malaga, Bahia de la Plata Urbanization. Discover unparalleled luxury in one of Estepona's premier developments, Bahia de la Plata. This fabulous duplex penthouse, situated in a gated community with 16 blocks, redefines coastal living with its array of amenities and breathtaking views. Key Features: Prime Location: Located in Estepona, Málaga, in the prestigious Bahia de la Plata urbanization. Resort-style Amenities: 5 communal pools, paddle tennis court, gym, spa, and direct access to the beach. 24-Hour Security: Enjoy peace of mind in this gated community with round-the-clock security. Recently Renovated: The duplex penthouse has been tastefully renovated for a modern and stylish ambiance. Duplex Layout: Ground Floor: Entrance hall, kitchen with laundry area, two exterior en-suite bedrooms (one with direct access to a spacious terrace), and a large living room with terrace. Second Floor: Two bedrooms, a bathroom, a terrace, and a private pool terrace for enjoying incredible sunsets. Stunning sea views and ample storage space. Parking and Storage: Two parking spaces and a storage room for your convenience. Estepona Lifestyle: Indulge in the Mediterranean lifestyle with access to the finest amenities and the convenience of being right on the beach. Estepona's charm, combined with the exclusivity of Bahia de la Plata, offers a unique living experience. Your New Beginning: Seize the opportunity to become the proud owner of this exceptional duplex penthouse. Contact Strand Properties today to schedule a private viewing and embark on a new era of coastal living.

Расположение

- ✓ На побережье
- ✓ Рядом с городом

бассейн

- ✓ Приватный

Климат-контроль

- ✓ Кондиционер

ВИД

- ✓ Сад
- ✓ Город

Особенности

- ✓ Крытая терраса
- ✓ Лифт
- ✓ Приватная терраса
- ✓ Кладовка
- ✓ Двойные стеклопакеты
- ✓ Подвал



















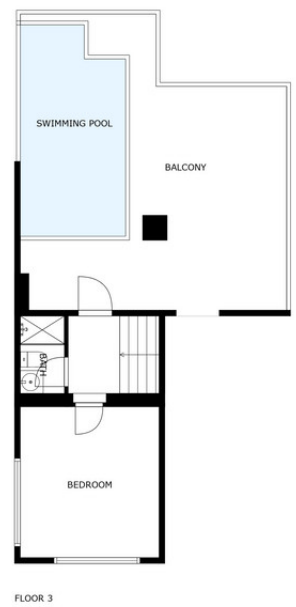
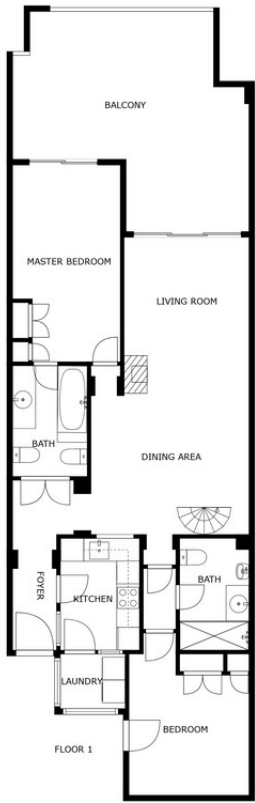












SIZES ARE APPROXIMATE, ACTUAL MAY VARY.

