

Продажа - Дом - Mijas

1.595.000€

Mijas

Дом



3



4



403 m2



800 m2

Off pan villa on a plot located in the urbanisation of Buena Vista, Mijas with beautiful sea views. The villa designed on 3 levels comprises: - Basement level with vehicle and pedestrian access to the house, parking area, installation room and elevator. - Ground Floor with has the living room, kitchen-diner, and guest bathroom, master bedroom with en-suite bathroom and its own terrace plus another covered terrace overlooking the swimming pool outside. - Top Floor with 2 bedrooms, both en-suite with fitted wardrobes. Bedroom 2 with its own private terrace. The garden with pool will be landscaped with decorative plants and trees. The design of the villa will be adjusted to the client's taste with a wide range of options in design and qualities so the client can easily create his or her living spaces.

Состояние

- ✓ Отличное

Особенности

- ✓ Крытая терраса
- ✓ Лифт
- ✓ Встроенные шкафы
- ✓ Приватная терраса
- ✓ Кладовка
- ✓ Подсобное помещение
- ✓ Двойные стеклопакеты

Парковка

- ✓ Подземная
- ✓ Более чем один
- ✓ Приватная

бассейн

- ✓ Приватный

Мебель

- ✓ Без мебели

Категория

- ✓ Строительство не завершено

Климат-контроль

- ✓ Кондиционер

Кухня

- ✓ Полностью оборудованная

ВИД

- ✓ Море

Сад

- ✓ Приватный
- ✓ Ландшафтный дизайн

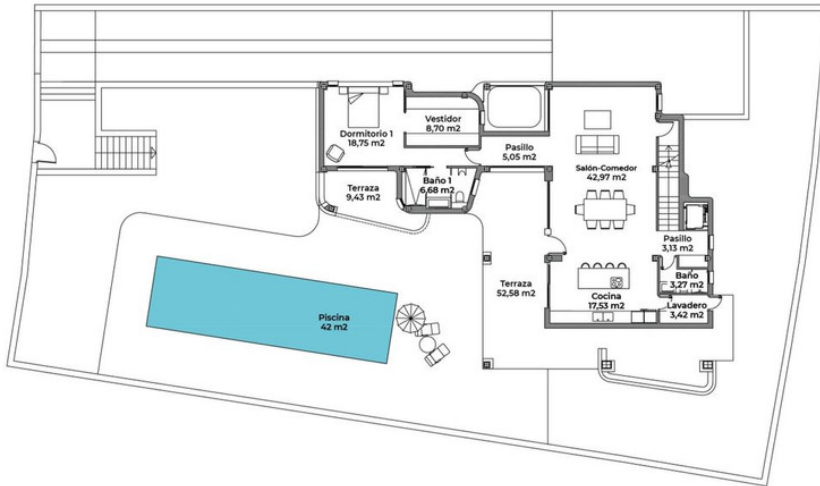


Imágenes y datos con caracter orientativos (No corresponden con esta villa)



Imágenes y datos con caracter orientativos (No corresponden con esta villa)

Nivel 0

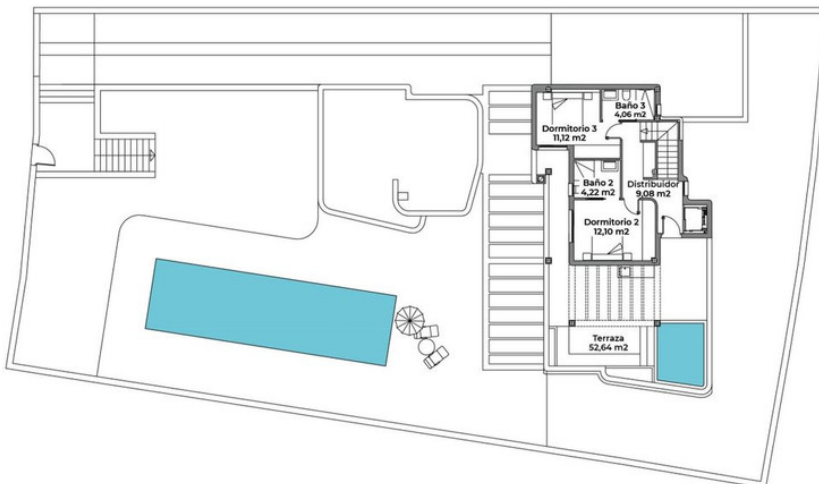


GENERALES:

Parcela	800m ²
TOTAL CONSTRUIDO	669 m²
Vivienda	403 m ²
Accesos	109 m ²
Piscina	42 m ²
Terrazas	115 m ²
Jardín	228 m ²
Plazas Parking Cubierto	4 ud
Plazas Parking No Cubierto	2 ud

Los datos reflejados en este documento son orientativos, sin valor contractual

Nivel +1

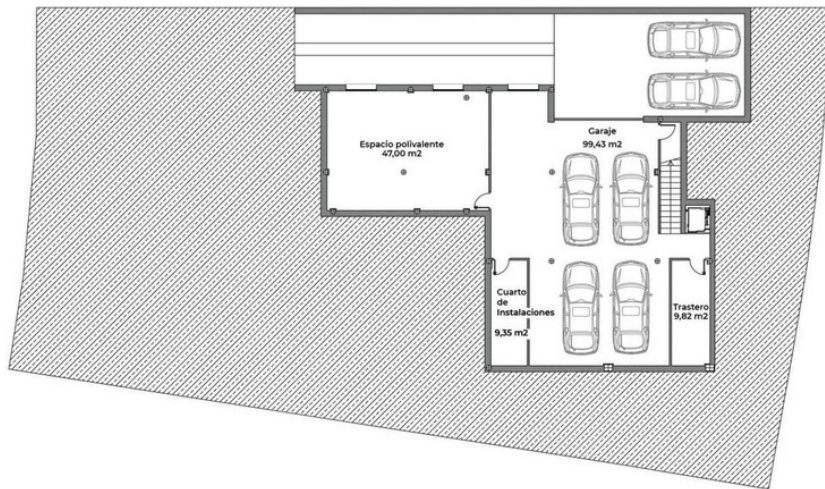


GENERALES:

Parcela	800m ²
TOTAL CONSTRUIDO	669 m²
Vivienda	403 m ²
Accesos	109 m ²
Piscina	42 m ²
Terrazas	115 m ²
Jardín	228 m ²
Plazas Parking Cubierto	4 ud
Plazas Parking No Cubierto	2 ud

Los datos reflejados en este documento son orientativos, sin valor contractual

Nivel -1



GENERALES:

Parcela	800m ²
TOTAL CONSTRUIDO	669 m²
Vivienda	403 m ²
Accesos	109 m ²
Piscina	42 m ²
Terrazas	115 m ²
Jardin	228 m ²
Plazas Parking Cubierto	4 ud
Plazas Parking No Cubierto	2 ud

Los datos reflejados en este documento son orientativos, sin valor contractual