

Продажа - Дом - Elviria

1.495.000€

Elviria

Дом



3



4



336 m2



1290 m2

OFF-PLAN luxury ecological contemporary villa in Elviria, Marbella, consisting of out; on the ground floor you have a garage for 2 cars, entrance hall, open plan living room with fully fitted kitchen and Bosch appliances, guest toilet, stair and access to the huge, covered terrace and pool. On the first floor, you have a distributor that leads to the master bedroom with ensuite bathroom and 2 dressings and terraces, there are a further 2 bedrooms that each have their ensuite bathroom and access to a big terrace Included are the plot, project, licenses and construction, and construction time 10 to 12 months after obtaining final construction licenses. Pictures of the kitchens and bathrooms are just examples final choice will be that of the client within the offered possibilities! Example of some of the specifications, - Interior and exterior floor tiles from GRESPANIA 600x600 - 800x800 - 1200x1200 (Colour and size to choose) - Bathroom walls with COVERLAM plates (GRESPANIA) 2700X1200 (Colour to choose) - Bathrooms from ROCA or similar - Aerothermia/airconditioning - Underfloor electric heating in the bathrooms - Underfloor heating in the livingroom - Ceiling high windows with a sunken track, 4+4/chamber/5+5 - Ceiling high and 1-meter-wide interior doors - Ceiling high pivot door and 1,30 wide - Fully fitted kitchen - White goods from Bosch or similar - 15 solar panels - Car charger Optional - Full kitchen from COVERLAM with aluminum frame doors (Price on request) - Full basement/garage/games room, extra bedroom and bathroom (Price on request) We are a construction company, Key-in-Hand, that can design and construct any possibility you can think of. If you do not see a design of us that you like we design a totally new villa for you according to your ideas and input. Although we prefer to construct ecological building, we can construct from traditional construction to ecological constructions it all depends on you. INCLUDED - Plot - Basic & technical architects project - Construction licenses - Full construction







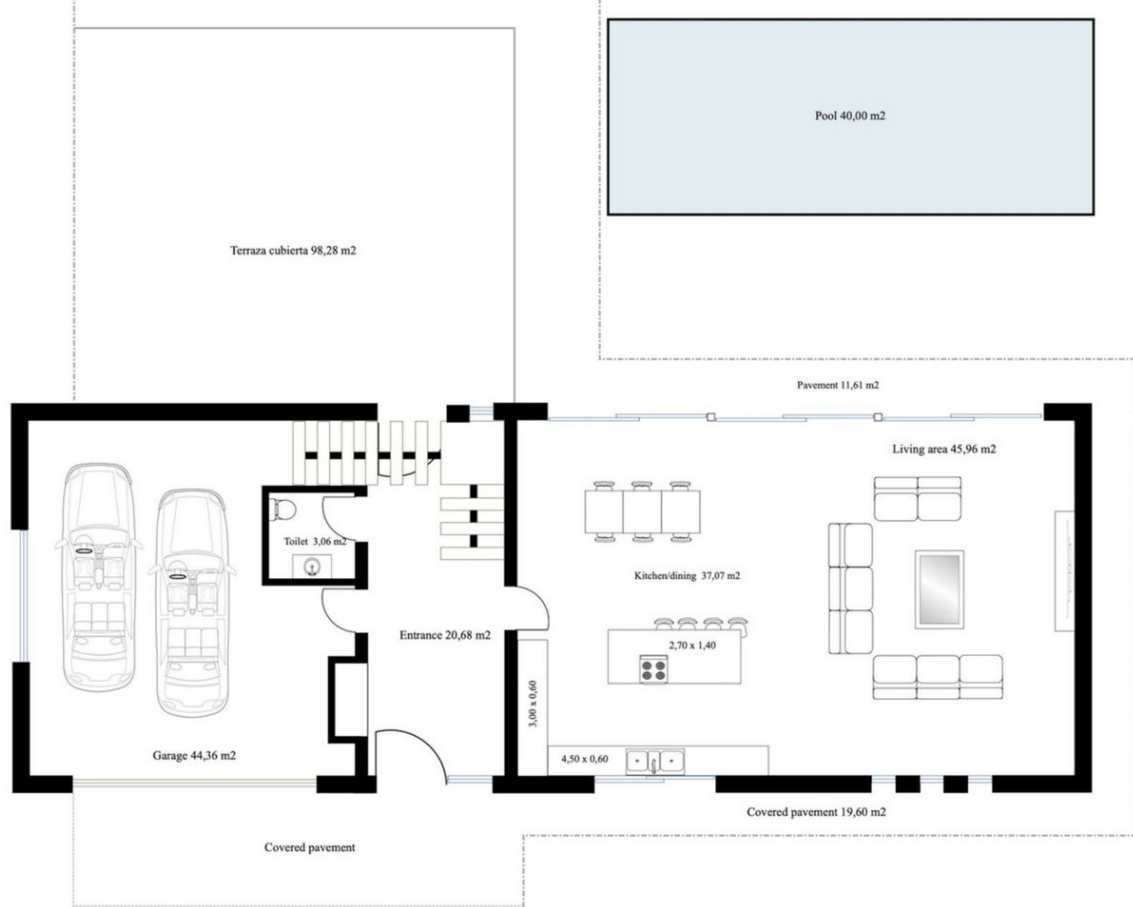


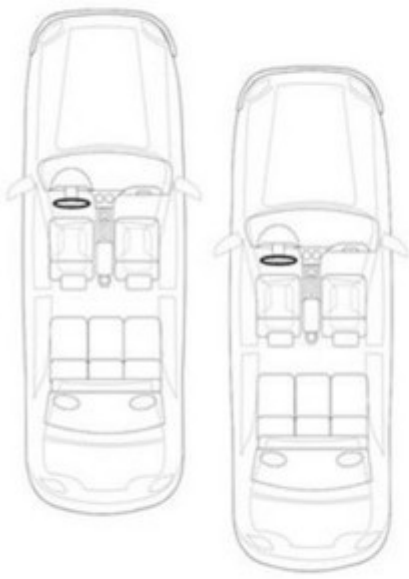
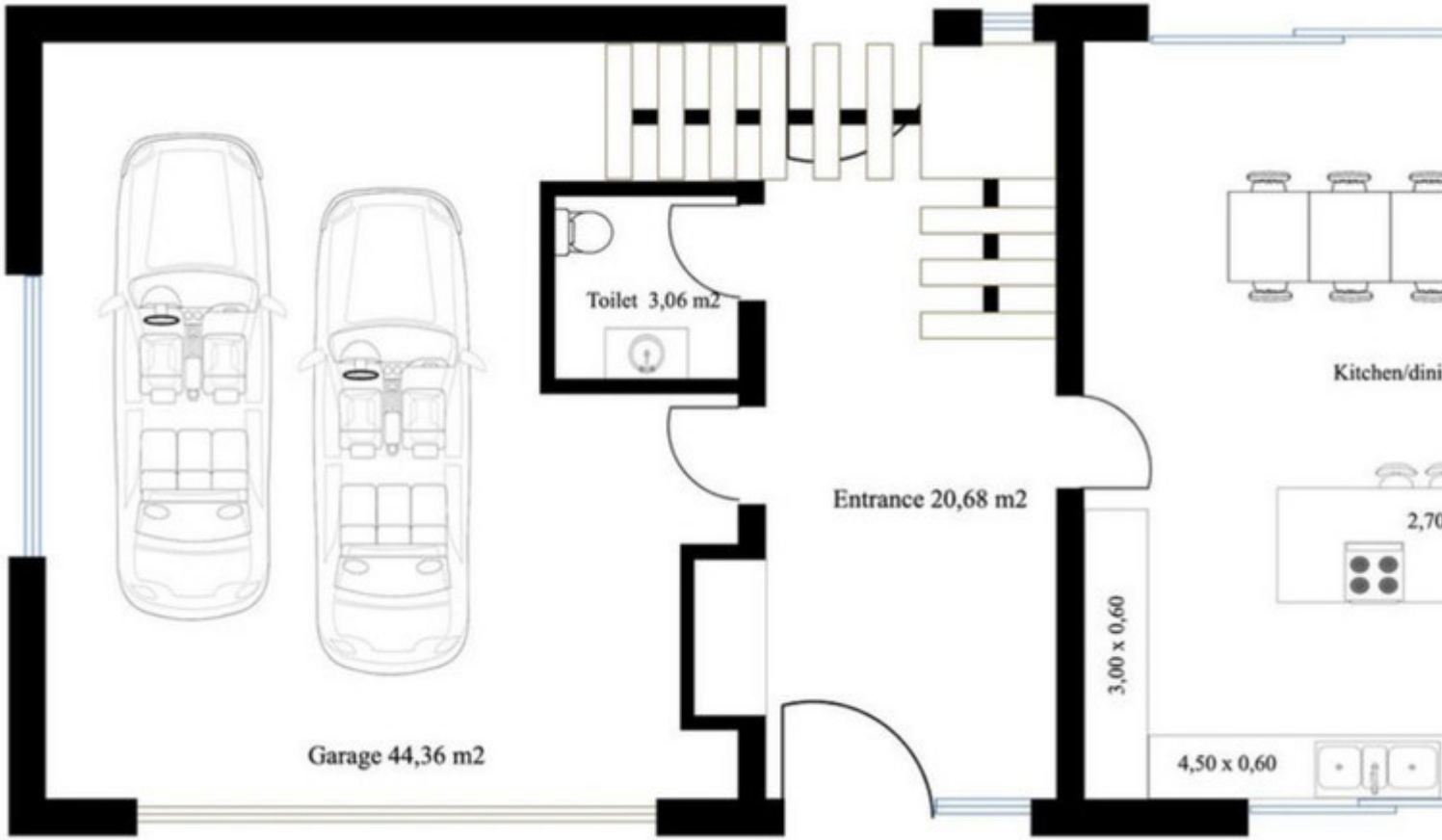








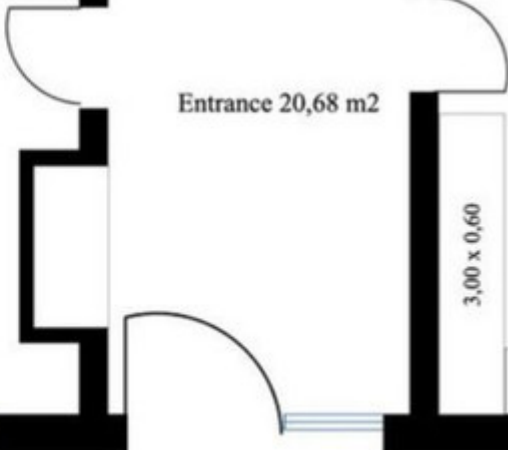




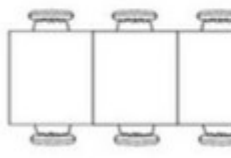
Garage 44,36 m²



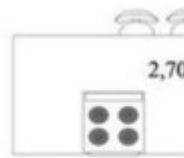
Toilet 3,06 m²



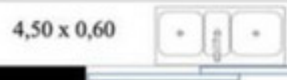
Entrance 20,68 m²



Kitchen/dini



2,70



4,50 x 0,60

3,00 x 0,60