

Продажа - Участок - Hacienda Las Chapas

800.000€

Hacienda Las Chapas

Участок



2367 m2

LARGE RESIDENTIAL PLOT WITH SEA VIEWS IN HACIENDA LAS CHAPAS, MARBELLA Located in the prestigious and secure community of Hacienda Las Chapas, in the eastern part of Marbella, this residential plot offers a unique opportunity to build the home of your dreams. The property boasts stunning sea views and is surrounded by a neighboring green area with beautiful trees, providing a tranquil and natural environment. Main Features: - Location: Hacienda Las Chapas, East Marbella - Views: Panoramic sea views - Environment: Neighboring green area with majestic trees - Community: Prestigious and secure - Basic Project Included: Yes Additional Description: Hacienda Las Chapas is renowned for its exclusivity and security, offering a high-quality lifestyle. The plot is spacious, allowing for various design and construction possibilities. The inclusion of a basic project facilitates the initiation of construction, ensuring you can start planning your home without delay. Benefits: - Natural Environment: Enjoy the natural beauty and serenity provided by the adjacent green area. - Security and Privacy: Hacienda Las Chapas is a gated community with 24/7 security. - Accessibility: Easy access to the main roads and services of Marbella, just 15 minutes by car from Marbella center and 25 minutes from Málaga International Airport. - Proximity to the Beach: Minutes away from Marbella's best beaches, perfect for enjoying the sun and sea. - Infrastructure: The plot features its own water well and already constructed retaining walls. - Luxury Amenities: Close to five-star hotels, exclusive beach clubs, excellent restaurants, and shopping facilities. - Quality Education: Near three of the most renowned international schools on the Costa del Sol: the English International School, the German School, and Colegio Ecos. Basic Project Included: A design for a single-family villa with a pool, with a construction area of 703 m². This plot is a hidden gem in one of Marbella's most coveted areas. Don't miss the opportunity to live in a paradisiacal environment with all amenities at your fingertips.

Расположение

- ✓ Рядом с гольф-полем
- ✓ Рядом с магазинами
- ✓ Близко к школам
- ✓ Рядом с лесом
- ✓ Урбанизация

Категория

- ✓ Выгодное предложение

ОРИЕНТАЦИЯ

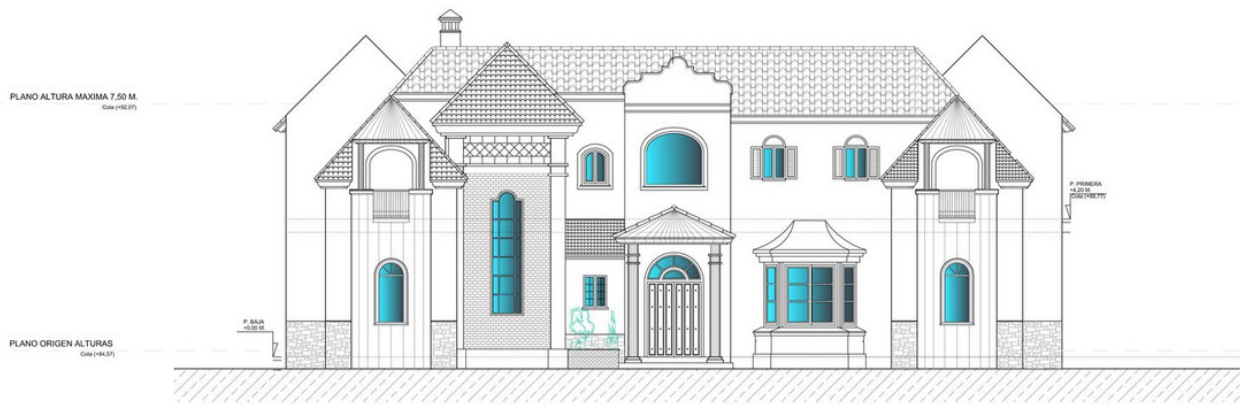
- ✓ Юг

Состояние

- ✓ Отличное

ВИД

- ✓ Море
- ✓ Горы
- ✓ Сельская местность
- ✓ Панорамный



ALZADO NORTE

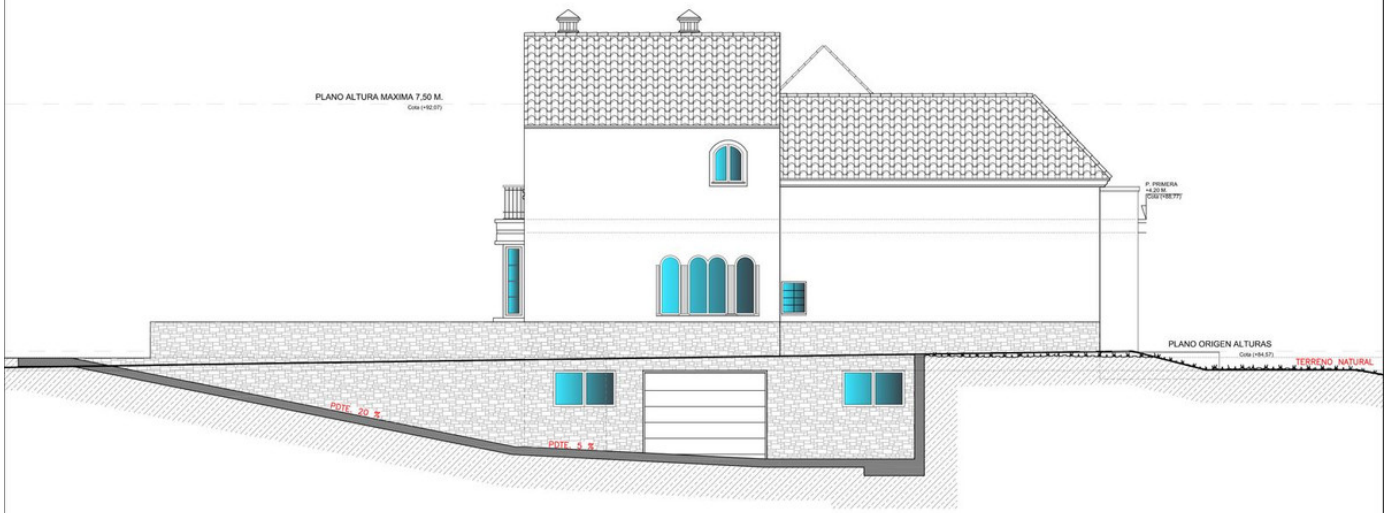




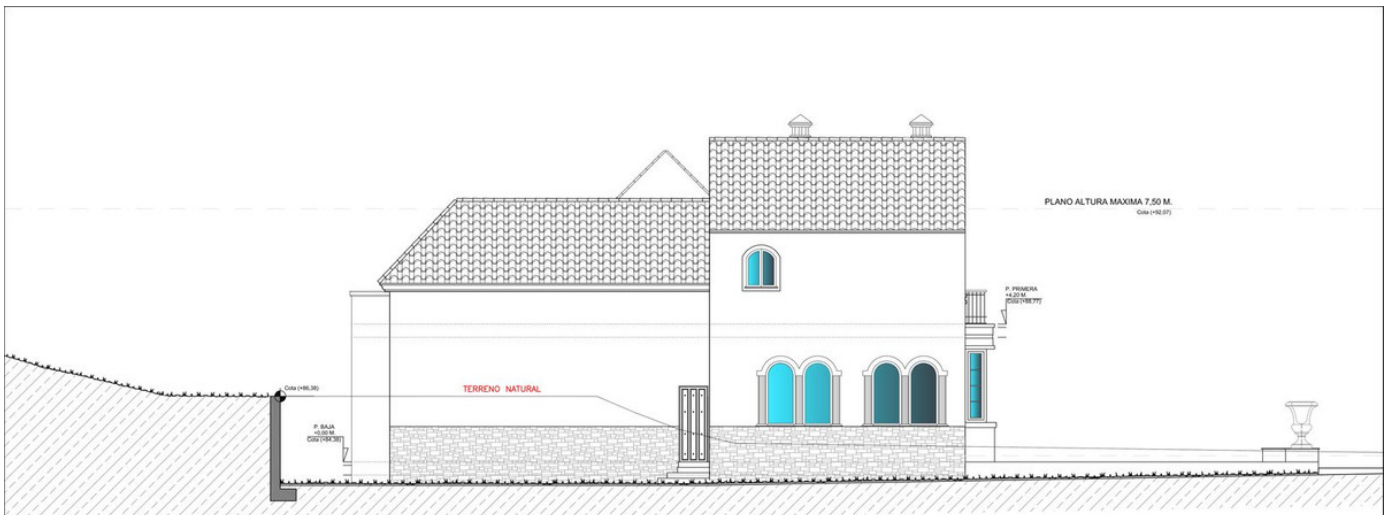




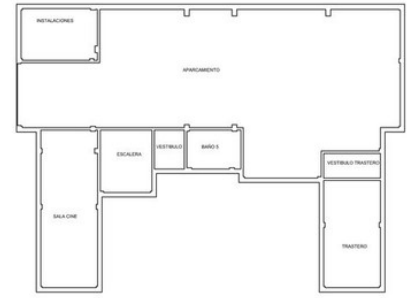
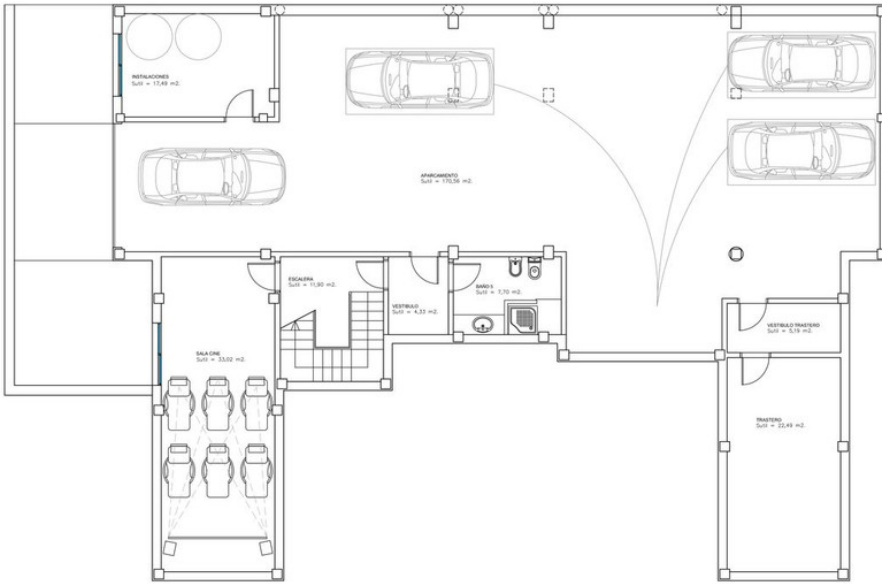
ALZADO SUR



ALZADO FACHADA ESTE



ALZADO FACHADA OESTE

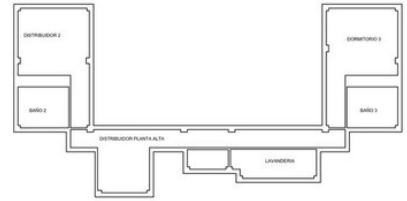
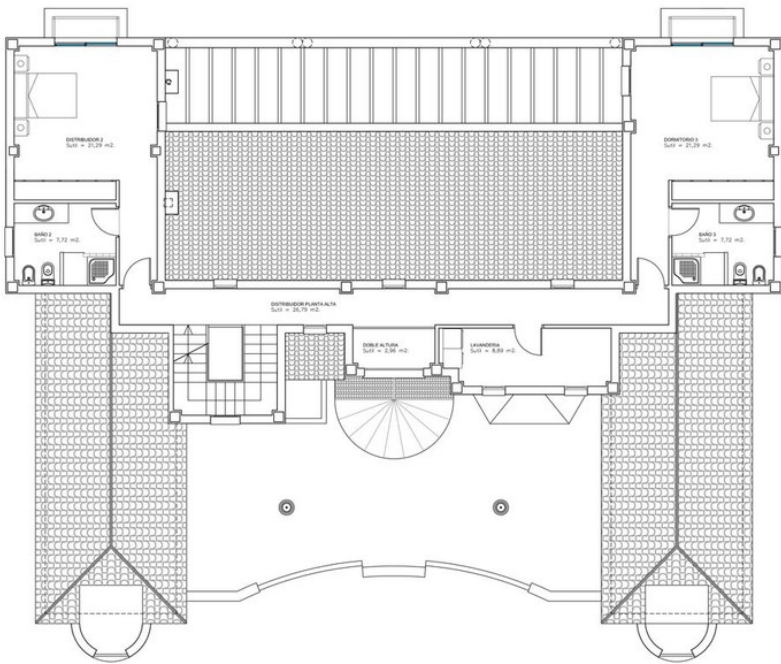


RESUMEN DE SUPERFICIES. PLANTA SOTANO
 SUP. CERRADA P. SOTANO.....302,69 M2.
 SUP. UTIL. P. SOTANO.....272,68 M2.

PLANTA SOTANO



SECCION TRANSVERSAL



RESUMEN DE SUPERFICIES. PLANTA BAJA

SUP. CERRADA P. ALTA	125.48 M2.
SUP. UTIL. P. ALTA	93.70 M2.
SUP. DOBLE ALTURA	2.96 M2.
SUPERFICIE TOTAL COMPUTABLE P. ALTA	122.52 M2.