

# Продажа - Апартамент - Estepona

## 798.000€

Estepona

Апартамент

Коммунальные: 1,920 EUR / год



2



2



185 m2

This stunning luxury duplex penthouse is located in the beautiful area of Arroyo Vaquero, Estepona West, Estepona, Malaga. Situated in a front line beach position, this property offers breathtaking sea views and direct access to the beach. With a built area of 185m<sup>2</sup>, this spacious penthouse includes 2 bedrooms and 2 bathrooms. The interior of the penthouse spans 115m<sup>2</sup> and features an open and bright living room, a dining room, and a fully fitted kitchen with modern appliances. The marble floors and double glazing give the property an elegant touch. The penthouse also boasts a private terrace of 70m<sup>2</sup>, which is ideal for outdoor dining, entertaining, and enjoying the stunning sea view. Additional features of this luxury penthouse include air conditioning, fitted wardrobes, a walk-in closet, and a roof terrace. The communal areas of the property include a swimming pool, a garden, and a garage. Other amenities in the vicinity include shops, restaurants, and schools, making this an ideal location for both relaxation and everyday convenience. The property is in excellent condition and is available with optional furniture. Pets are allowed, and internet connection is available through both Wi-Fi and fiber optic. With its prime beachfront location, luxurious features, and stunning sea views, this duplex penthouse in Arroyo Vaquero, Estepona is a truly exceptional property.

### Расположение

- ✓ Первая линия пляжа
- ✓ На побережье
- ✓ Рядом с портом
- ✓ Рядом с магазинами
- ✓ Рядом с морем
- ✓ Рядом с городом
- ✓ Близко к школам

### Климат-контроль

- ✓ Кондиционер

### Кухня

- ✓ Полностью оборудованная
- ✓ Частично оборудованная

### ОРИЕНТАЦИЯ

- ✓ Юго-восток

### ВИД

- ✓ Море
- ✓ Панорамный

### Сад

- ✓ Общественный

### Состояние

- ✓ Отличное

### Особенности

- ✓ Встроенные шкафы
- ✓ Рядом с транспортом
- ✓ Приватная терраса
- ✓ Мраморные полы
- ✓ Барбекю
- ✓ Двойные стеклопакеты

### Парковка

- ✓ Общая

### бассейн

- ✓ Общий

### Мебель

- ✓ По желанию

### Категория

- ✓ Первая линия пляжа
- ✓ Элитная





























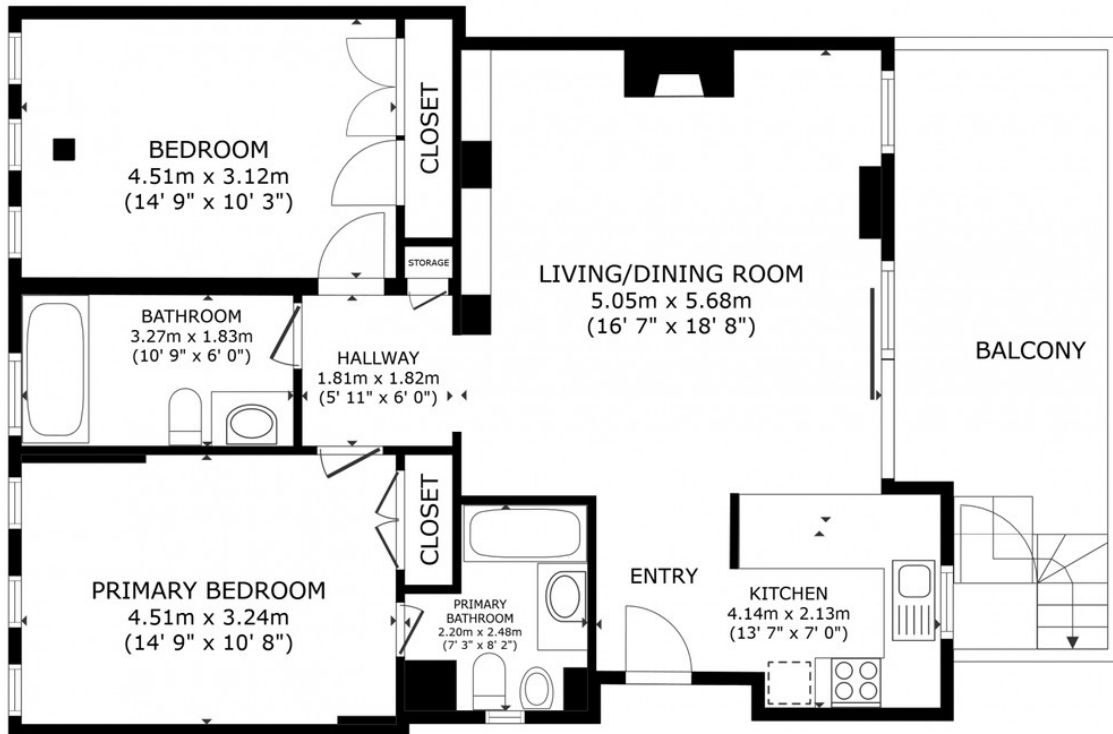










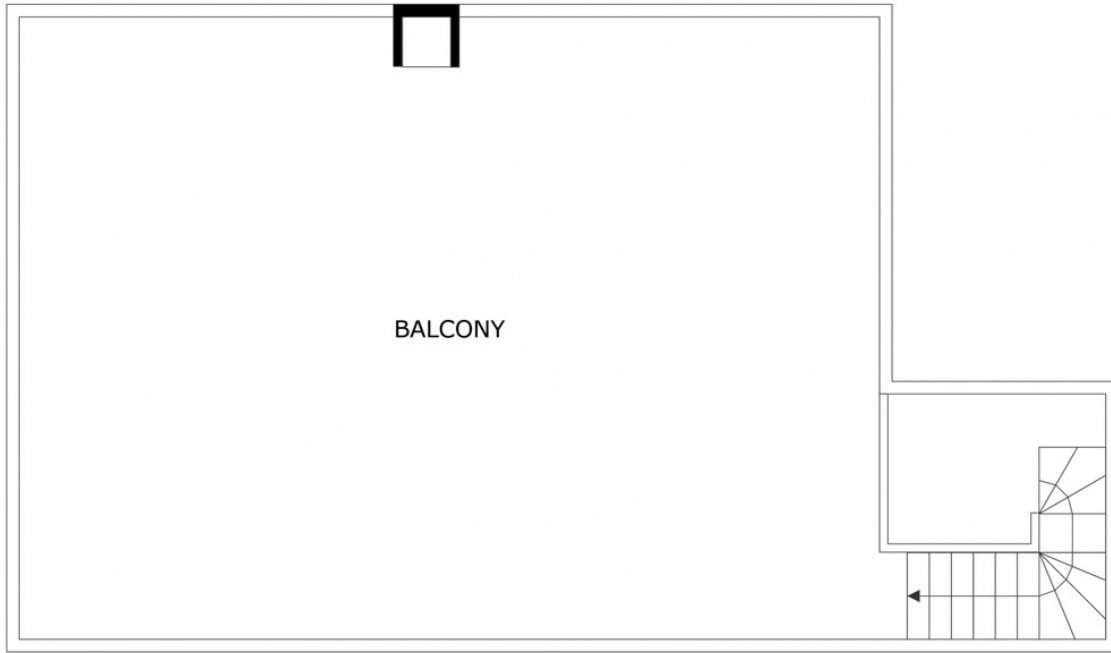


FLOOR 1



GROSS INTERNAL AREA  
FLOOR 1 85.6 m<sup>2</sup> (921 sq.ft.)  
EXCLUDED AREAS : BALCONY 17.1 m<sup>2</sup> (184 sq.ft.) - BALCONY 85.3 m<sup>2</sup> (918 sq.ft.)  
TOTAL : 85.6 m<sup>2</sup> (921 sq.ft.)  
SIZES AND DIMENSIONS ARE APPROXIMATE, ACTUAL MAY VARY.





FLOOR 2



GROSS INTERNAL AREA  
FLOOR 1 85.6 m<sup>2</sup> (921 sq.ft.)  
EXCLUDED AREAS : BALCONY 17.1 m<sup>2</sup> (184 sq.ft.) BALCONY 85.3 m<sup>2</sup> (918 sq.ft.)  
TOTAL : 85.6 m<sup>2</sup> (921 sq.ft.)  
SIZES AND DIMENSIONS ARE APPROXIMATE, ACTUAL MAY VARY.

