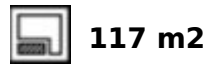
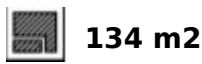


## Продажа - Дом - Riviera del Sol

# 595.000€

Riviera del Sol

Дом



Resale opportunity! Will be ready in December 2024 Introducing a remarkable development of contemporary semi-detached houses in Riviera del Sol, Mijas, with views over the mediterranean. Distributed over 2 floors, together with a garden and the option to add a private pool.. Each home has been designed with quality and comfort in mind, and the outdoor space is ideal for enjoying the Costa del Sol's magnificent climate. 48 contemporary semi-detached houses in Riviera del Sol, Mijas, with views over the Mediterranean, community swimming pool, gymnasium, co-working area & landscaped communal garden areas. The communal areas include a saline chlorination pool, gymnasium, co-working area, and landscaped garden areas. The build specifications, amenities and location make these semi-detached houses excellent value for money. The houses are superbly located on a hillside overlooking the mediterranean. All facilities are in close proximity, including good access to the highway, beautiful beaches, international schools, fine dining, golf courses and the lively cosmopolitan towns of La Cala de Mijas and Calahonda. It is a private and peaceful place to live, close to all the fun that the Costa del Sol has to offer, but not in the middle of it. Riviera del Sol is ideally located midway between the popular resort towns of Fuengirola and Marbella. Fuengirola is just a 10 minute drive away and enjoys a wide range of facilities, great beaches, the Mijas Aqua Park, multi- screen cinemas and the Parque Miramar Shopping Centre. The upmarket resort of Marbella and the popular La Cañada shopping centre is a short 15 minute drive away in the opposite direction. Beach: Playa Riviera, 2.5km, 5 mins Golf: Calanova Golf, 1.5km, 6 mins Commercial :Riviera del Sol, 2.2 km, 4 mins

### бассейн

✓ Общий

### Кухня

✓ Полностью оборудованная

### ВИД

✓ Море

### Сад

✓ Общественный

✓ Приватный

### Особенности

✓ Приватная терраса

### Парковка

✓ Более чем один

✓ Приватная

### Мебель

✓ Полностью меблированный







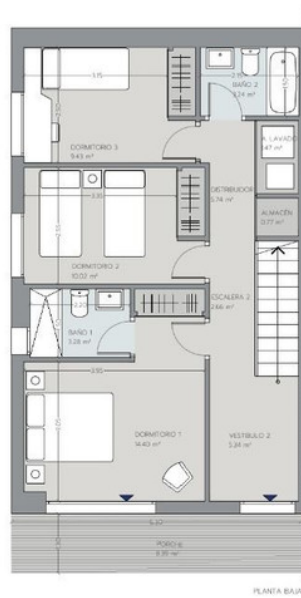
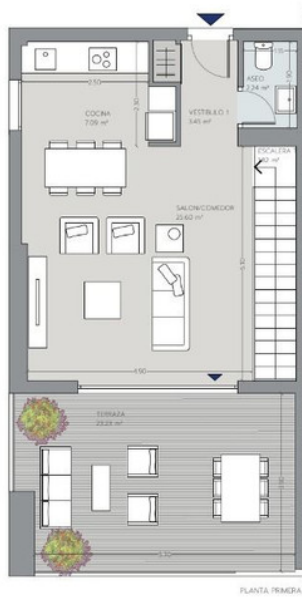












## V3D.05

VIVIENDA PA 05

Superficie Útil Interior	96.55 m <sup>2</sup>
Superficie Útil Exterior Cubierta	8.39 m <sup>2</sup>
Superficie Útil Total	104.94 m <sup>2</sup>
Superficie Útil Exterior Descubierta	140.95 m <sup>2</sup>
Superficie Construida con Comunes	130.29 m <sup>2</sup>

La superficie construida incluye el 100% de los espacios exteriores cubiertos.

Superficies según Decreto 218/2005

Superficie Útil	106.20 m <sup>2</sup>
Superficie Construida	134.09 m <sup>2</sup>



LAS IMÁGENES Y DATOS QUE SE PUBLICAN DE LA PROMOCIÓN CONSTITUYEN UNA SIMULACIÓN GRÁFICA DEL PROYECTO CONSTRUCTIVO QUE SE ENCUENTRA EN FASE DE PROYECTO DE DEFINICIÓN