

Продажа - Дом - Istán

1.649.000€

Istán

Дом

ИБИ: 1,231 EUR / год



5



5



442 m2



10337 m2

Villa Findlay, a gem in Istán, Málaga, is the perfect choice for those seeking an independent life surrounded by nature. With stunning panoramic views and endless spaces filled with all the comforts, this villa is a dream come true. Situated on an extensive plot of over 10,000 square meters near the charming village, this 3-story house offers 442 sqm of construction, spacious terraces, and a 70 sqm pool that resembles a private spa. The basement features two bedrooms that open to the porch and pool, both with en-suite bathrooms. Additionally, this floor includes a fully-equipped game room. On the first floor, the entrance from the covered garage (with capacity for 2 cars) and additional uncovered parking spaces leads to a grand hall that opens to a spacious living room with a fireplace, connected to the dining room, kitchen, patio, and a guest toilet. This floor also has two bedrooms and two bathrooms, perfect for the convenience of elderly or mobility-impaired individuals. The third floor is a private sanctuary that houses the enormous master bedroom, with a spectacular bathroom featuring a whirlpool tub, a walk-in closet, and an expansive terrace with views of the Istán reservoirs, mountains, and the sea. The entire house is equipped with underfloor heating, a heating/cooling system, and several stoves, as well as a security system. Don't miss the opportunity to live in this truly unique property. Request a visit and be amazed by Villa Findlay, a true paradise on the Costa del Sol. ALA

Расположение

- ✓ Загородный
- ✓ Горная деревня

Климат-контроль

- ✓ Камин
- ✓ Полы с подогревом

Кухня

- ✓ Полностью оборудованная

ОРИЕНТАЦИЯ

- ✓ Запад

ВИД

- ✓ Горы
- ✓ Сельская местность
- ✓ Панорамный
- ✓ Озеро
- ✓ Лес

Сад

- ✓ Приватный

Состояние

- ✓ Хорошее

Особенности

- ✓ Крытая терраса
- ✓ Приватная терраса
- ✓ Подсобное помещение
- ✓ Деревянные полы
- ✓ Барбекю

меры безопасности

- ✓ Огражденный комплекс
- ✓ Сигнализация

бассейн

- ✓ Приватный

Мебель

- ✓ Частично меблированный

Парковка

- ✓ Гараж
- ✓ С навесом
- ✓ Более чем один

























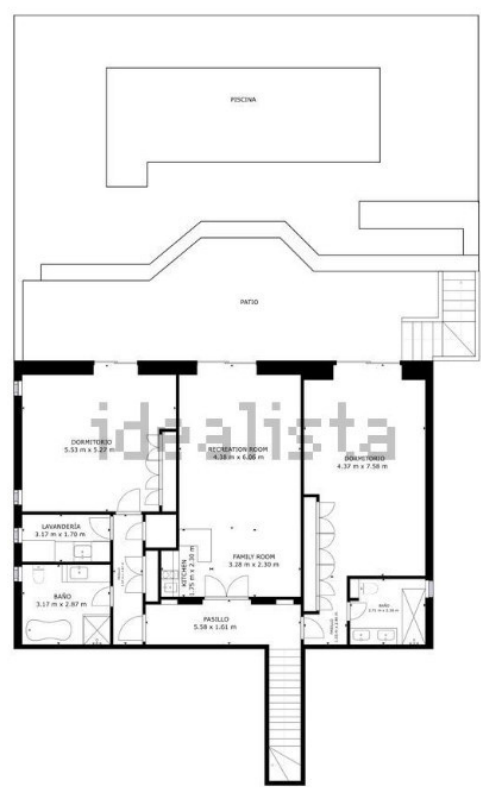
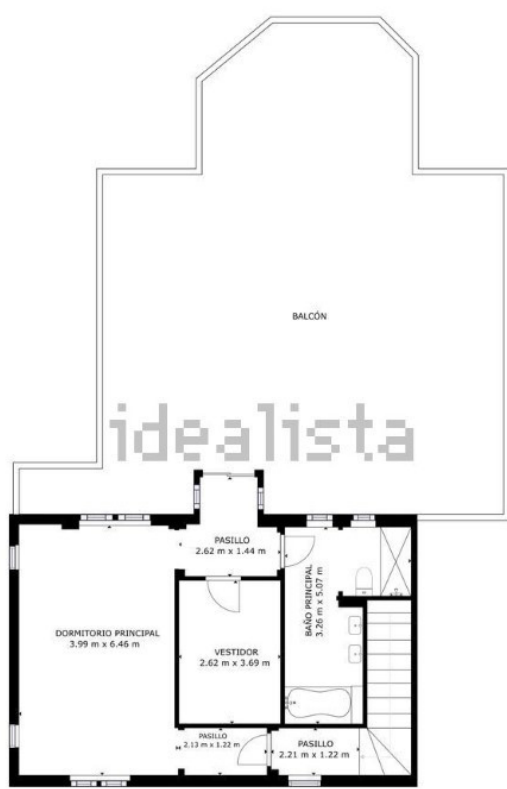






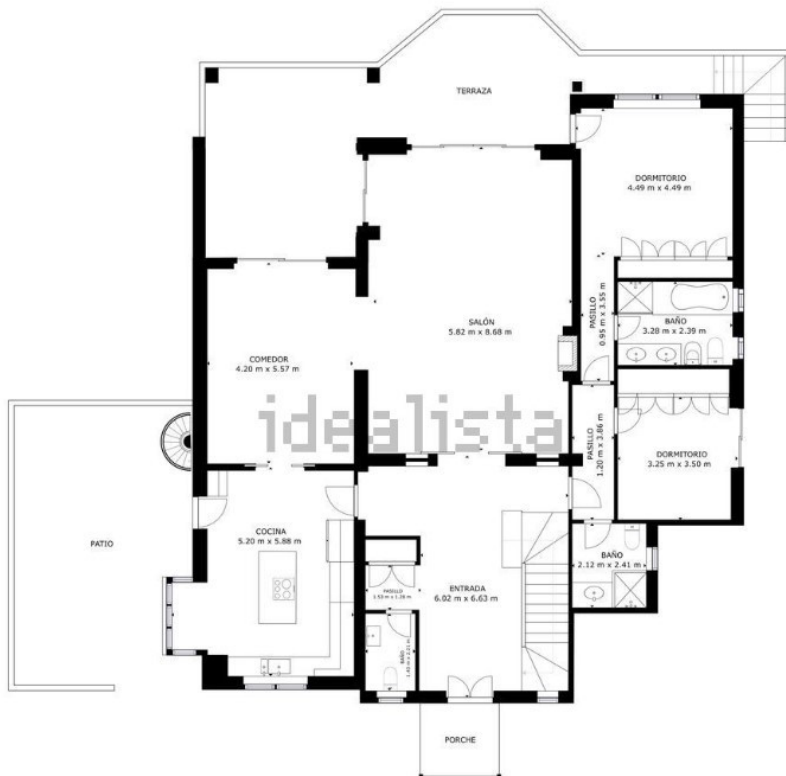






ÁREA INTERNA BRUTA
 PLANTA 1: 153.78 m², PLANTA 2: 213.34 m², PLANTA 3: 67.54 m²
 ÁREAS EXCLUIDAS: PORCHE: 4.73 m², TERRAZA: 53.35 m², PATIO: 281.1 m², BALCÓN: 112.35 m²
 TOTAL: 434.66 m²
 LOS TAMAÑOS Y LAS DIMENSIONES SON APROXIMADAS Y PUEDEN VARIAR EN ALGUNOS CASOS.

ÁREA INTERNA BRUTA
 PLANTA 1: 153.78 m², PLANTA 2: 213.34 m², PLANTA 3: 67.54 m²
 ÁREAS EXCLUIDAS: PORCHE: 4.73 m², TERRAZA: 53.35 m², PATIO: 281.1 m², BALCÓN: 112.35 m²
 TOTAL: 434.66 m²
 LOS TAMAÑOS Y LAS DIMENSIONES SON APROXIMADAS Y PUEDEN VARIAR EN ALGUNOS CASOS.



ÁREA INTERNA BRUTA
 PLANTA 1: 153.78 m², PLANTA 2: 213.34 m², PLANTA 3: 67.54 m²
 ÁREAS EXCLUIDAS: PORCHE: 4.73 m², TERRAZA: 53.35 m², PATIO: 281.1 m², BALCÓN: 112.35 m²
 TOTAL: 434.66 m²
 LOS TAMAÑOS Y LAS DIMENSIONES SON APROXIMADAS Y PUEDEN VARIAR EN ALGUNOS CASOS.