

# Продажа - Дом - Coín

## 345.000€

Coín

Дом

Коммунальные: 1,200 EUR / год

ИБИ: 400 EUR / год

Мусор: 150 EUR / год



3



3



200 m2

Lovely townhouse in Coín, in the well known community of Los Nebrales. With a constructed area of 200m<sup>2</sup>, this property has 3 large bedrooms, 3 bathrooms (one of which is en-suite) and an attractive spacious living room. The generously sized kitchen is connected to an interior terrace, perfect for enjoying moments of tranquillity, outdoor dining and barbecues with friends and loved ones. In addition, the house has a patio on the ground floor and a solarium offering panoramic views, ideal for enjoying the Andalusian climate. The property is located in a very friendly gated community, which offers a variety of amenities, including a communal swimming pool and beautiful mature gardens. Residents will enjoy a riverside park in the community, as well as a secure environment thanks to the surveillance cameras and security entrance. With 2 parking spaces in the private garage and 2 additional parking spaces outside, access and convenience are guaranteed. Additional features include air conditioning and central heating, a fireplace for cooler days, and double glazed windows ensuring a quiet and comfortable environment. The property is also equipped with an alarm system, electric blinds and fibre optic internet access. The bedrooms have fitted wardrobes, and the bathrooms are fully equipped, adding a touch of luxury.

#### Расположение

- ✓ Рядом с магазинами
- ✓ Рядом с городом
- ✓ Близко к школам

#### Климат-контроль

- ✓ Кондиционер
- ✓ Центральное отопление
- ✓ Камин

#### Сад

- ✓ Приватный

#### ОРИЕНТАЦИЯ

- ✓ Юго-восток

#### ВИД

- ✓ Горы
- ✓ Сельская местность
- ✓ Панорамный
- ✓ Сад
- ✓ Город
- ✓ Улица

#### меры безопасности

- ✓ Электрические жалюзи
- ✓ Сигнализация

#### Состояние

- ✓ Отличное

#### Особенности

- ✓ Крытая терраса
- ✓ Встроенные шкафы
- ✓ Спутниковое телевидение
- ✓ Ванная комната
- ✓ Барбекю
- ✓ Двойные стеклопакеты

#### Парковка

- ✓ Приватная

#### бассейн

- ✓ Общий

#### Мебель

- ✓ Без мебели









































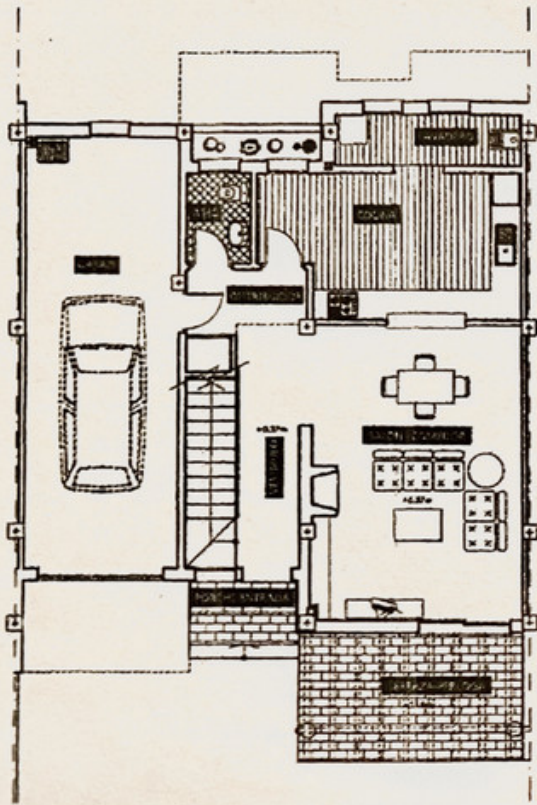




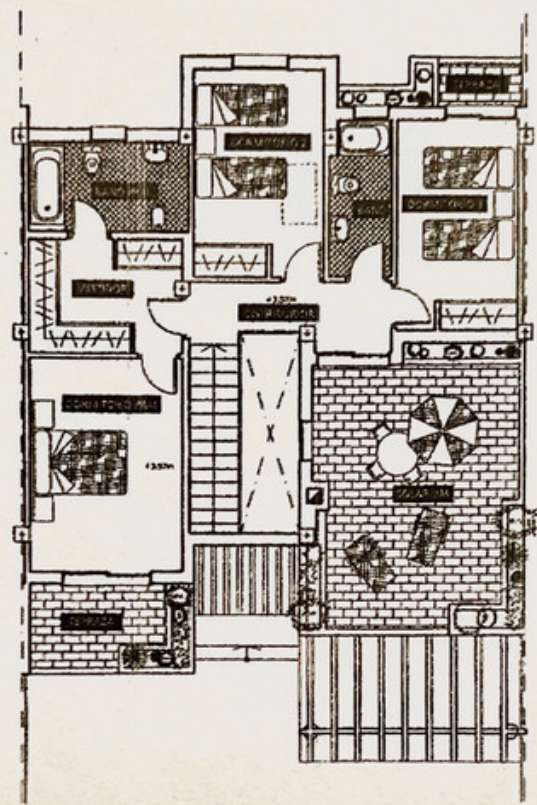




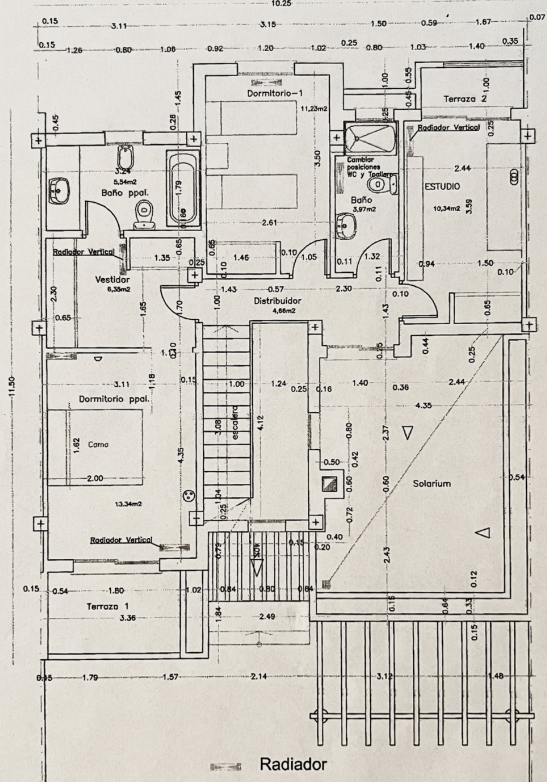
PLANTA BAJA GROUND FLOOR



PLANTA ALTA UPPER FLOOR



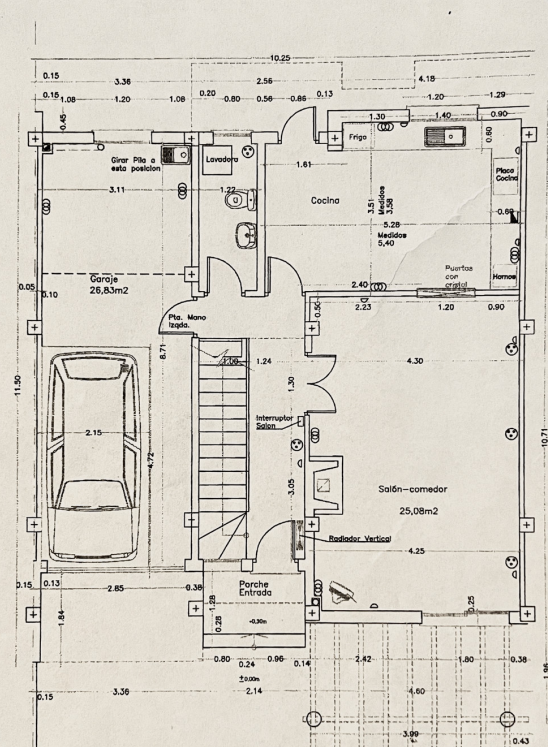
PLANTA



VIVIENDA Nº 7  
PLANTA ALTA  
E 1/50

Radiador

- ⊕ Base Enchufe 15A c/TT
- ⊗ Base 3 Enchufes 15A c/TT
- ◊ Punto de Luz en Pared



VIVIENDA Nº 7  
PLANTA BAJA  
E 1/50

Radiador

- ⊕ Base Enchufe 15A c/TT
- ⊗ Base 3 Enchufes 15A c/TT
- ◊ Punto de Luz en Pared