

Продажа - Дом - Benalmadena

565.000€

Benalmadena

Дом

ИБИ: 878 EUR / год

Мусор: 145 EUR / год



3



3



234 m2



608 m2

Charming detached villa with sea views in Benalmádena This spacious villa is perfect for those seeking a quiet yet central location in Benalmádena. The main floor consists of an open-plan kitchen and living room with mountain and sea views, providing a bright and welcoming atmosphere. On the lower floor, you'll find 3 bedrooms. One with an en-suite bathroom and separate laundry room. Another with its own 20 sqm terrace – ideal for relaxing or enjoying the sun. 1 additional bathroom, and an extra room that can be used as a home office, playroom, or additional living space, offering flexibility for a variety of needs. Additionally, the property includes a separate studio apartment, perfect for guests or as a rental unit. The outdoor area features several spacious terraces, a large private swimming pool, and some greenery with plants and trees around the plot, creating a pleasant outdoor space. The property also comes with two closed garages with storage space and additional street parking in front. Although the villa has several levels and stairs, it offers great value for money in a peaceful area, just a few minutes' drive from the A7 motorway. Malaga Airport is only 15 minutes away by car, and there are supermarkets like Lidl and Mercadona, Benalmádena Golf, and both local and private hospitals nearby

Расположение

- ✓ Урбанизация

Климат-контроль

- ✓ Кондиционер

Кухня

- ✓ Полностью оборудованная

ОРИЕНТАЦИЯ

- ✓ Северо-восток
- ✓ Восток

ВИД

- ✓ Море
- ✓ Улица

Парковка

- ✓ Гараж
- ✓ Улица
- ✓ Более чем один

Состояние

- ✓ Хорошее

Особенности

- ✓ Крытая терраса
- ✓ Приватная терраса
- ✓ Апартаменты для гостей
- ✓ Ванная комната

Категория

- ✓ Перепродажа

бассейн

- ✓ Приватный

Мебель

- ✓ Полностью меблированный















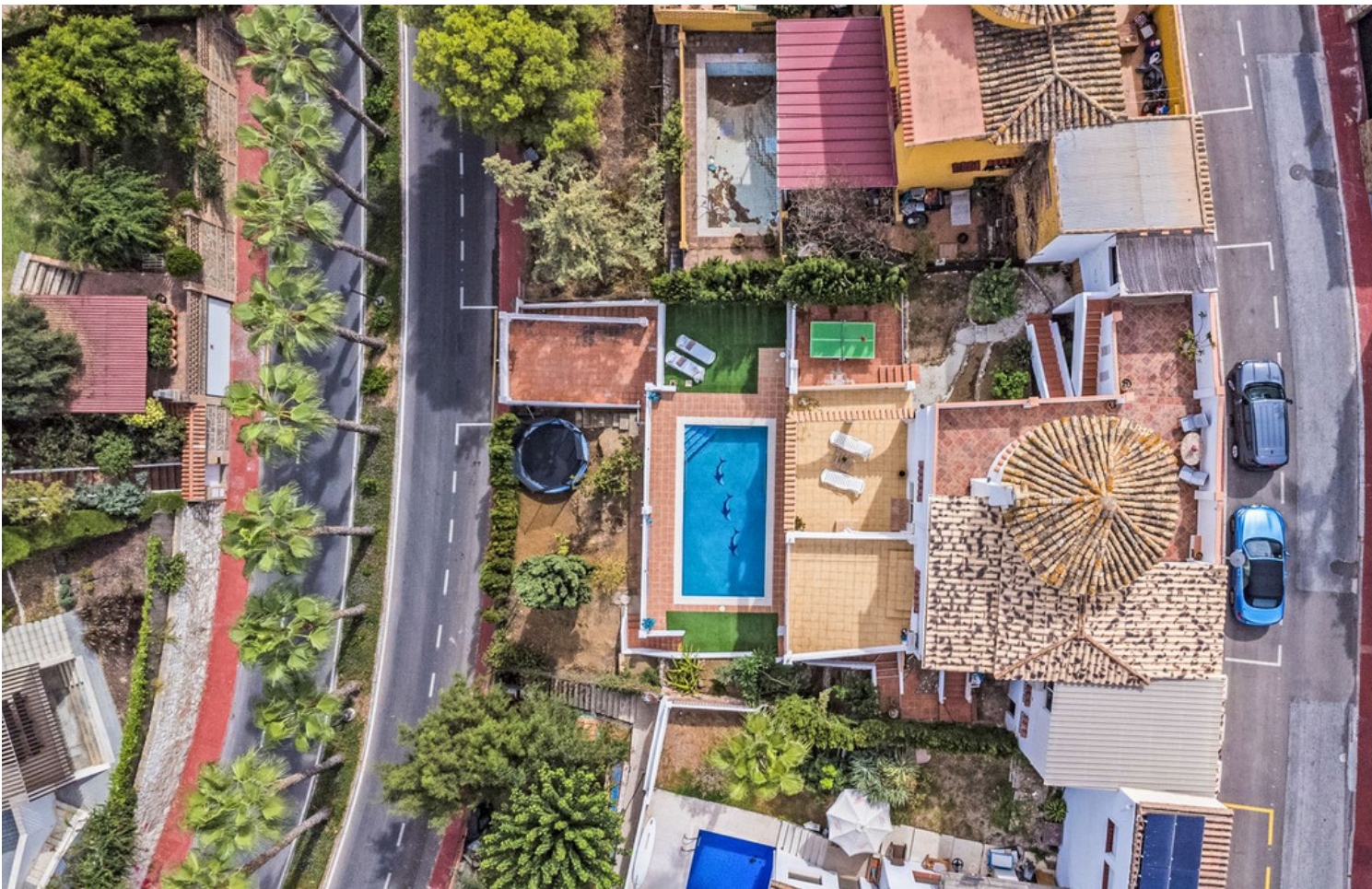


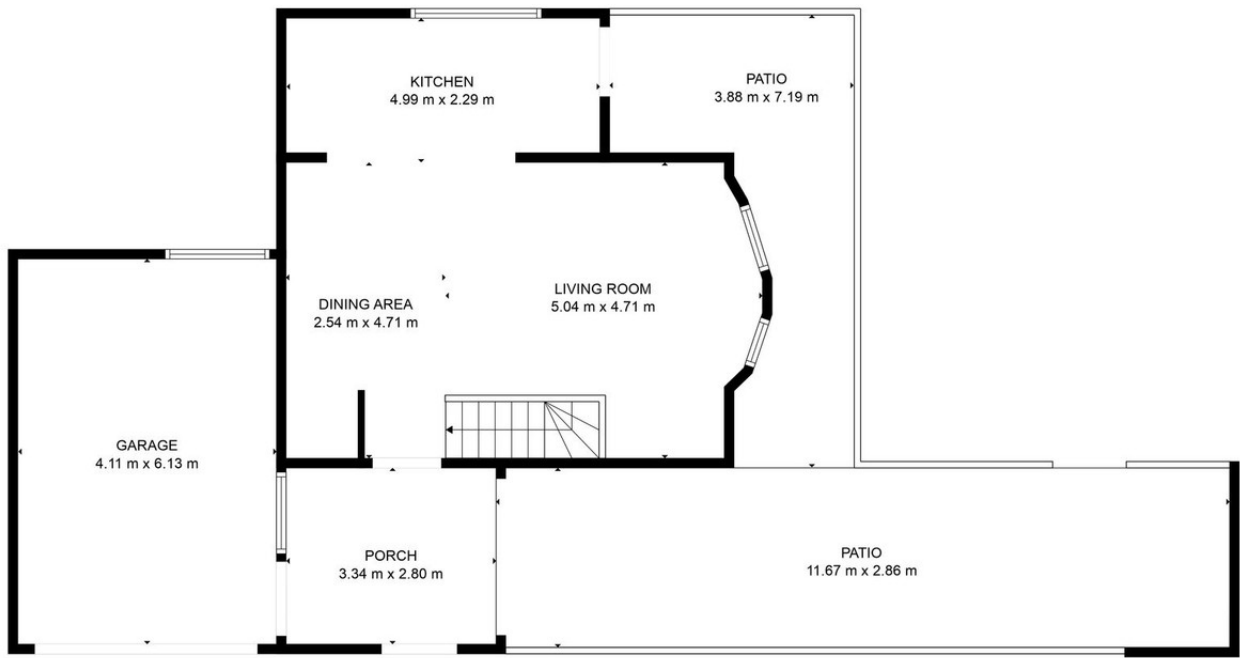






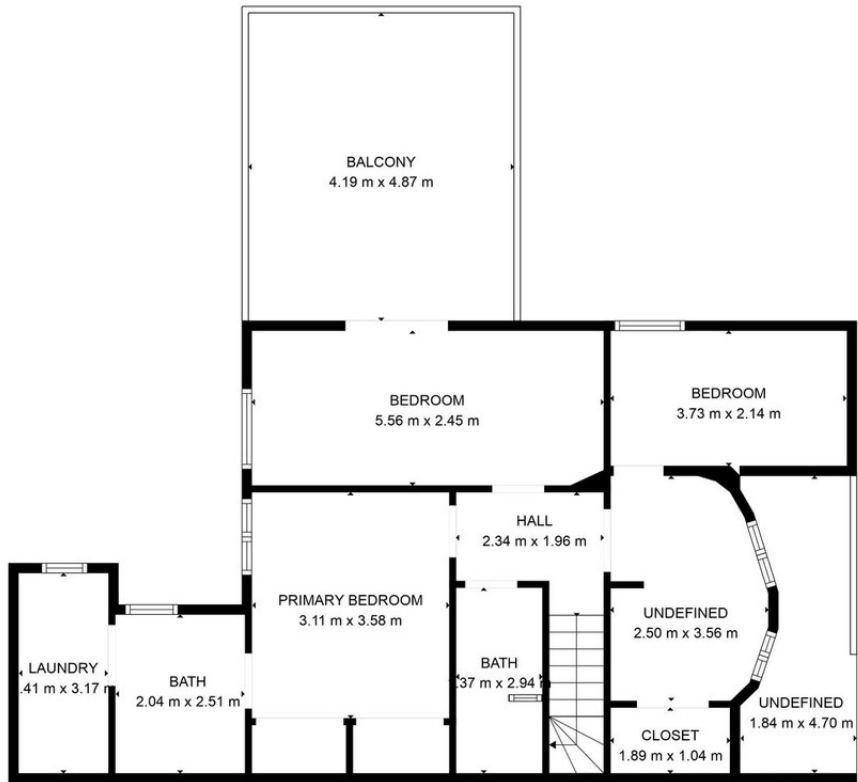






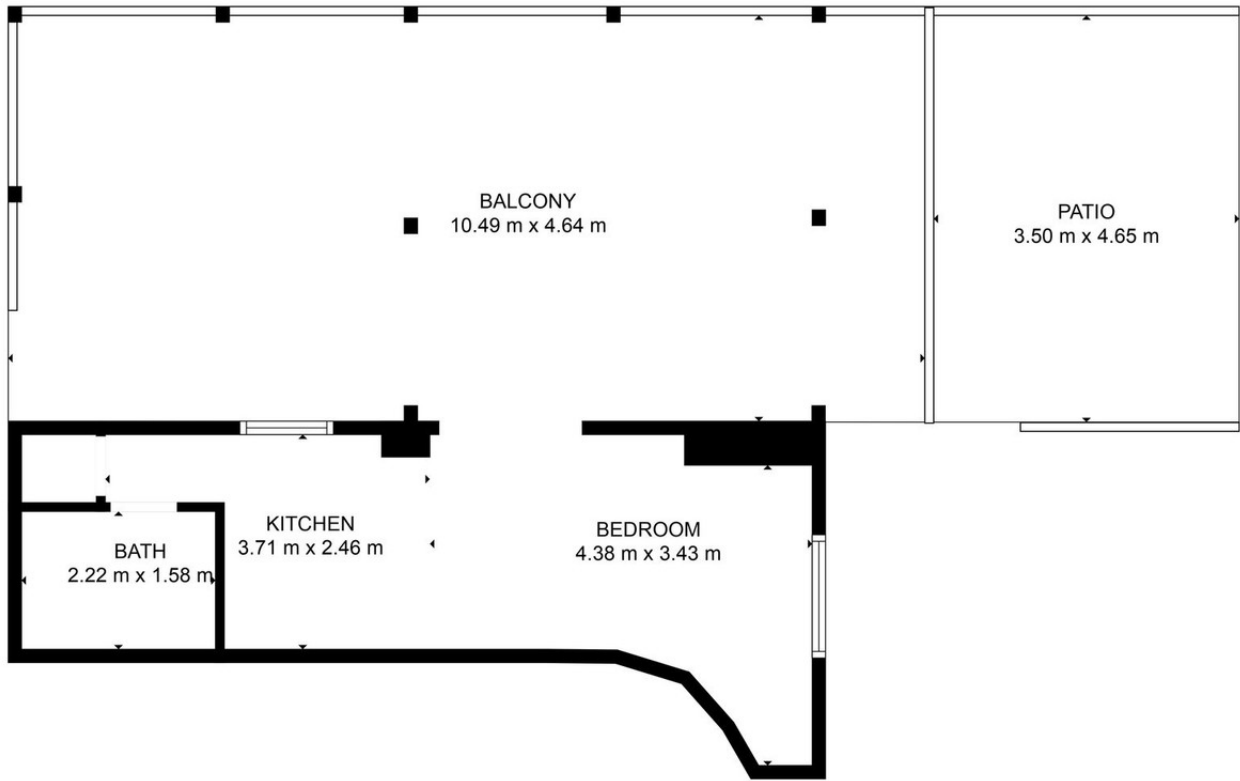
TOTAL: 139 m2
 BELOW GROUND: 0 m2, FLOOR -2: 24 m2, FLOOR -1: 69 m2, FLOOR 0: 46 m2
 EXCLUDED AREAS: UNDEFINED: 77 m2, PATIO: 97 m2, BALCONY: 69 m2,
 GARAGE: 25 m2, PORCH: 10 m2

FLOOR PLAN CREATED BY CUBICASA APP. MEASUREMENTS DEEMED HIGHLY RELIABLE BUT NOT GUARANTEED.



TOTAL: 139 m2
 BELOW GROUND: 0 m2, FLOOR -2: 24 m2, FLOOR -1: 69 m2, FLOOR 0: 46 m2
 EXCLUDED AREAS: UNDEFINED: 77 m2, PATIO: 97 m2, BALCONY: 69 m2,
 GARAGE: 25 m2, PORCH: 10 m2

FLOOR PLAN CREATED BY CUBICASA APP. MEASUREMENTS DEEMED HIGHLY RELIABLE BUT NOT GUARANTEED.



TOTAL: 139 m2
BELOW GROUND: 0 m2, FLOOR -2: 24 m2, FLOOR -1: 69 m2, FLOOR 0: 46 m2
EXCLUDED AREAS: UNDEFINED: 77 m2, PATIO: 97 m2, BALCONY: 69 m2,
GARAGE: 25 m2, PORCH: 10 m2

FLOOR PLAN CREATED BY CUBICASA APP. MEASUREMENTS DEEMED HIGHLY RELIABLE BUT NOT GUARANTEED.