

## Долгосрочная Аренда - Апартамент - La Quinta

# 3.500€ / Месяц

La Quinta

Апартамент



2



2



100 m2



74 m2

AVAILABLE FOR WINTER RENTAL- UNTIL END OF APRIL Nestled in the prestigious enclave of Real de La Quinta, Benahavis, this newly built ground floor apartment offers an unparalleled blend of luxury and natural beauty. With panoramic views that stretch towards the shimmering sea and majestic mountains, this property promises an idyllic lifestyle for those seeking tranquillity and elegance. The apartment's design harmoniously integrates with its surroundings, providing a serene retreat with every modern comfort. This exquisite property boasts two spacious bedrooms and two well-appointed bathrooms, featuring underfloor heating for added luxury. The interior spans 96m<sup>2</sup>, complemented by a 64m<sup>2</sup> terrace and a 74m<sup>2</sup> plot, providing ample space for relaxation and entertainment. The fully fitted kitchen is designed for culinary enthusiasts, while the private garden and covered terrace offer perfect settings for al fresco dining and leisure. Residents will enjoy the benefits of a gated community with 24-hour security service, ensuring peace of mind. The communal pool provides a refreshing escape, while the private garage offers convenient parking. Situated front line to the golf course, this apartment is ideal for golf enthusiasts, offering easy access to the greens and the vibrant community within the resort. High-quality finishings are evident throughout the apartment, enhancing its appeal. The property is available for winter rental until the end of June, making it a perfect seasonal retreat. With its combination of luxury, location, and lifestyle, this apartment in Real de La Quinta is a rare opportunity to experience the best of Benahavis living.

### Расположение

- ✓ Первая линия гольфа

### ОРИЕНТАЦИЯ

- ✓ Восток
- ✓ Юг

### Состояние

- ✓ Отличное

### бассейн

- ✓ Общий

### Климат-контроль

- ✓ Кондиционер
- ✓ Центральное отопление
- ✓ Полы с подогревом в ванной

### ВИД

- ✓ Море
- ✓ Горы
- ✓ Панорамный

### Особенности

- ✓ Крытая терраса
- ✓ Лифт
- ✓ Встроенные шкафы
- ✓ Приватная терраса
- ✓ Двойные стеклопакеты

### Кухня

- ✓ Полностью оборудованная

### Сад

- ✓ Общественный
- ✓ Приватный

### меры безопасности

- ✓ Огражденный комплекс
- ✓ Охрана 24 часа

### Парковка

- ✓ Подземная
- ✓ Гараж
- ✓ Более чем один
- ✓ Приватная







































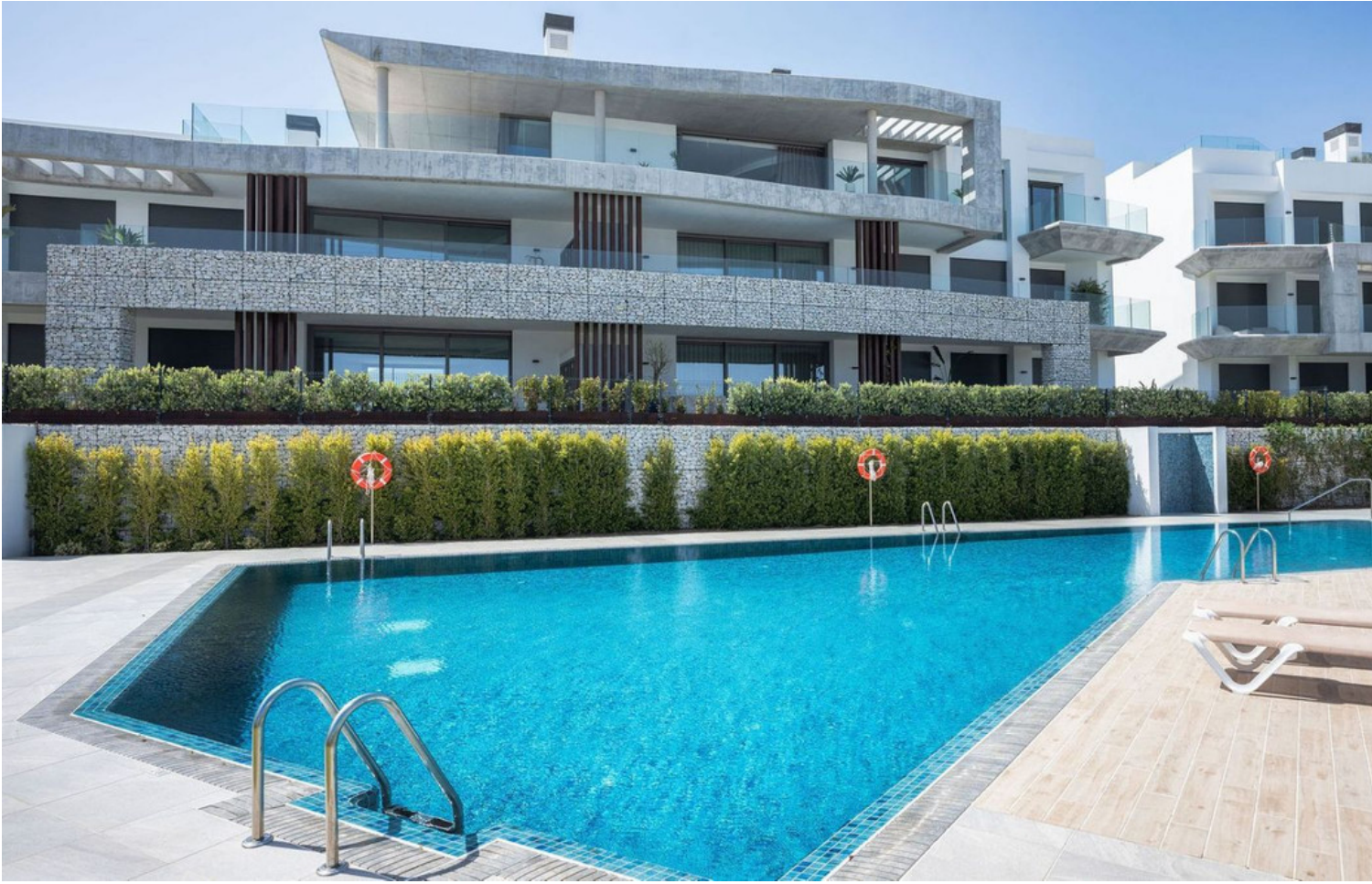




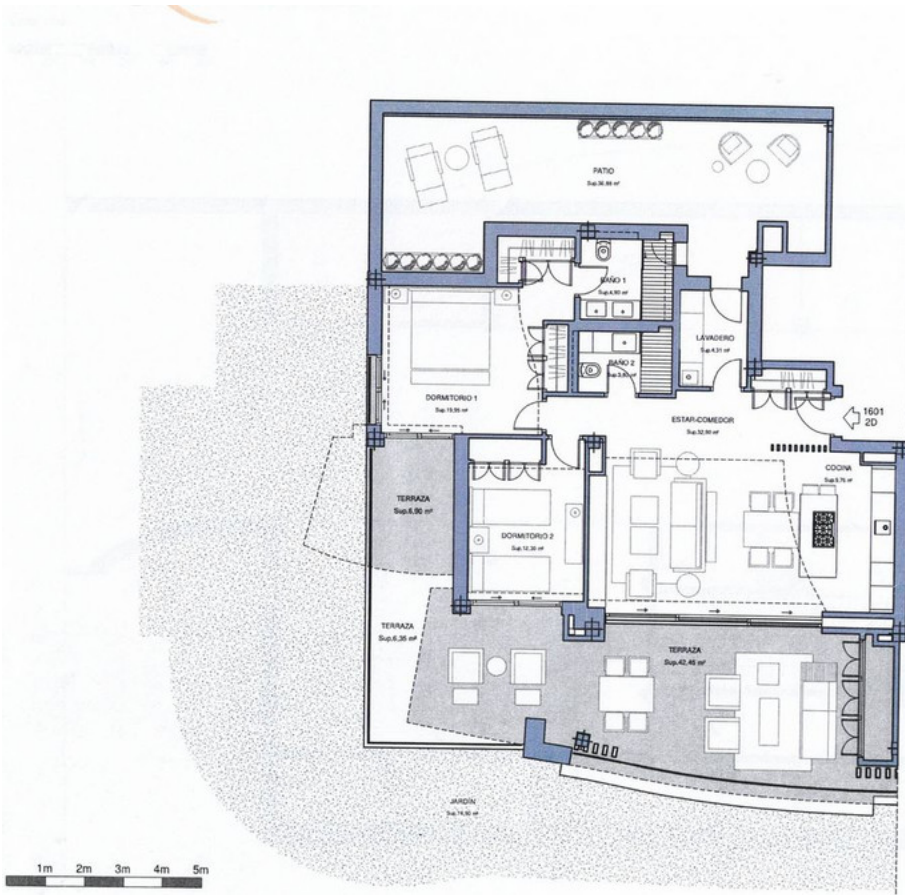




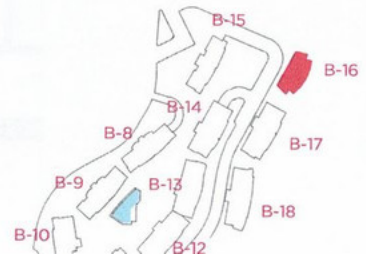








Escala 1:100  
 Este documento es sólo informativo. Las áreas y medidas son aproximadas y podrían sufrir modificaciones por razones técnicas y/o administrativas.  
 Las superficies de las estancias indicadas en el plano con superficies azules

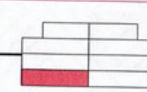


1/1 Apart. 1001

- SUPERFICIE**
- Total construida cerrada
  - Total superficie útil\*
  - Construida terraza cubierta
  - Construida terraza abierta
  - Total terrazas
  - Zonas comunes
  - Construida patio
  - Jardín

**Total construida**

\*Superficie útil según decreto



REAL