

Ref.-ID: MIBGR4352539

Benahavís

Дом

Коммунальные: 5,400 EUR / год



4



7



680 m2



1005 m2

Every day is a summer day in the Esmeralda Villas, the 4-bedroom residences with glorious terraced gardens and exclusive pool areas. Here, everything was created to offer the most relaxing and unwinding experience, like the steam & sauna rooms and the home theatre in the basement floor. All villas come with concrete boundary walls, double glazed windows, cooling and heating system, levelled and graded outdoor spaces, precast concrete pavers on driveway and parking. Each villa features an exquisite pool and beautifully crafted hardscape. Located within the gated community of Los Jaralillos - Benahavís, prides itself on providing a private and secure environment for its residents with premium 24/7 security services. THE PROJECT OFFERS 53 VILLAS WITH 3 DIFFERENT STYLES OF 4, 5, AND 6 BEDROOMS, PRICES RANGING FROM 3.600.000 EU TO 8.400.000 EU.

#### Расположение

- ✓ Рядом с гольф-полем
- ✓ Рядом с магазинами
- ✓ Рядом с городом
- ✓ Близко к школам

#### Климат-контроль

- ✓ Кондиционер
- ✓ Камин
- ✓ Полы с подогревом

#### Кухня

- ✓ Полностью оборудованная
- ✓ Частично оборудованная

#### Категория

- ✓ Элитная

#### ОРИЕНТАЦИЯ

- ✓ Юго-восток

#### ВИД

- ✓ Море
- ✓ Горы
- ✓ Гольф
- ✓ Сельская местность
- ✓ Панорамный
- ✓ Сад
- ✓ Бассейн

#### Сад

- ✓ Приватный

#### Состояние

- ✓ Отличное
- ✓ Новое строительство

#### Особенности

- ✓ Крытая терраса
- ✓ Лифт
- ✓ Встроенные шкафы
- ✓ Рядом с транспортом
- ✓ Приватная терраса
- ✓ Солярий
- ✓ Тренажерный зал
- ✓ Сауна
- ✓ Игровая комната
- ✓ Апартаменты для гостей
- ✓ Кладовка
- ✓ Подсобное помещение
- ✓ Ванная комната
- ✓ Мраморные полы
- ✓ Джакузи
- ✓ Барбекю
- ✓ Двойные стеклопакеты
- ✓ Умный дом

#### меры безопасности

- ✓ Электрические жалюзи
- ✓ Домофон
- ✓ Сигнализация
- ✓ Охрана 24 часа

#### бассейн

- ✓ Приватный
- ✓ С подогревом

#### Мебель

- ✓ Полностью меблированный

#### Парковка

- ✓ С навесом









# ESMERALDA VILLAS

4 - BED	<b>SQM</b>	680 - 822
	<b>SQFT</b>	7,320 - 8,848
<b>PLOT SIZE</b>		
<b>SQM</b>	1,005 - 1,669	
<b>SQFT</b>	10,818 - 17,965	

Including total indoor & outdoor built up area.



BASEMENT

Disclaimer: All pictures, plans, layouts, information, data and details included in this brochure are indicative only and may change at any time up to the final 'as built' status in accordance with final designs of the project, regulatory approvals and planning permissions. All accessories and interior finishes such as wallpaper, chandeliers, furniture, electronics, white goods, curtains, hard and soft landscaping, pavements, features, gym, and other elements displayed in the brochure, or between the plot boundary, are not part of the unit and are shown for illustrative purposes only.



# ESMERALDA VILLAS

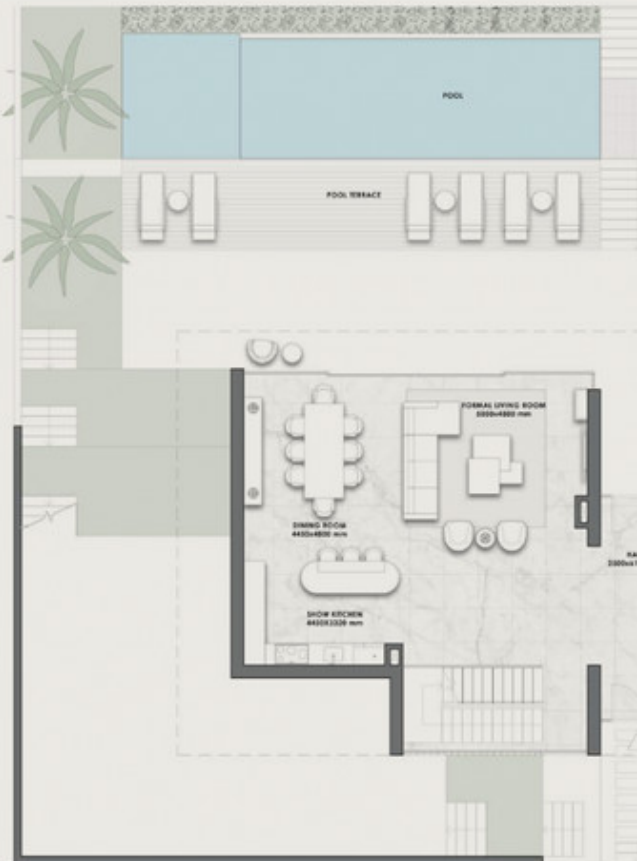
4 - BED	<b>SQM</b>	680 - 822
	<b>SQFT</b>	7,320 - 8,848
<b>PLOT SIZE</b>		
<b>SQM</b>	1,005 - 1,669	
<b>SQFT</b>	10,818 - 17,965	

Including total indoor & outdoor built up area.



GROUND FLOOR

Disclaimer: All pictures, plans, layouts, information, data and details included in this brochure are indicative only and may change at any time up to the final 'as built' status in accordance with final designs of the project, regulatory approvals and planning permissions. All accessories and interior finishes such as wallpaper, chandeliers, furniture, electronics, white goods, curtains, hard and soft landscaping, pavements, features, gym, and other elements displayed in the brochure, or between the plot boundary, are not part of the unit and are shown for illustrative purposes only.



# ESMERALDA VILLAS

<b>4 - BED</b>	<b>SQM</b> 680 - 822
	<b>SQFT</b> 7,320 - 8,848
<b>PLOT SIZE</b>	
<b>SQM</b>	1,005 - 1,669
<b>SQFT</b>	10,818 - 17,965

Including total indoor & outdoor built up area.



FIRST FLOOR



Disclaimer: All pictures, plans, layouts, information, data and details included in this brochure are indicative only and may change at any time up to the final 'as built' status in accordance with final designs of the project, regulatory approvals and planning permissions. All accessories and interior finishes such as wallpaper, chandeliers, furniture, electronics, white goods, curtains, hard and soft landscaping, pavements, features, gym, and other elements displayed in the brochure, or between the plot boundary, are not part of the unit and are shown for illustrative purposes only.

# ESMERALDA VILLAS

<b>4 - BED</b>	<b>SQM</b> 680 - 822
	<b>SQFT</b> 7,320 - 8,848
<b>PLOT SIZE</b>	
<b>SQM</b>	1,005 - 1,669
<b>SQFT</b>	10,818 - 17,965

Including total indoor & outdoor built up area.



ROOFTOP TERRACE



Disclaimer: All pictures, plans, layouts, information, data and details included in this brochure are indicative only and may change at any time up to the final 'as built' status in accordance with final designs of the project, regulatory approvals and planning permissions. All accessories and interior finishes such as wallpaper, chandeliers, furniture, electronics, white goods, curtains, hard and soft landscaping, pavements, features, gym, and other elements displayed in the brochure, or between the plot boundary, are not part of the unit and are shown for illustrative purposes only.