

**Ref.-ID: MIBGR4417516**

**Benalmadena**

**Участок**



**16513 m2**

Incredible land to build a hotel complex, aparthotel, also ideal as a sports hotel on an existing luxury base. This 16513m<sup>2</sup> plot has a total buildable area of more than 11500m<sup>2</sup>. With an elegant restaurant and cafe, a paddle tennis club with 5 courts, a children's playground and an indoor playground and several rooms to host different events, it has successfully catered for multiple weddings in a single day. It is a privileged location, a stone's throw from the famous Torrequebrada golf course, designed by the renowned José Gancedo, and just a few minutes from the beautiful sandy beaches of the Costa del Sol (1,2km to be exact) From the prestigious Torrequebrada area you can find in the center of Benalmádena Costa, 8 minutes by car, 20 minutes from Malaga airport and 25 minutes from the center of Marbella. Contact us to find out more about this profitable investment, you won't be disappointed.

**Расположение**

- ✓ Рядом с портом
- ✓ Рядом с магазинами
- ✓ Рядом с морем
- ✓ Близко к школам

**ВИД**

- ✓ Море
- ✓ Горы
- ✓ Гольф
- ✓ Сельская местность
- ✓ Панорамный

**Особенности**

- ✓ Падл теннис
- ✓ Ресторан на территории

**Сад**

- ✓ Приватный

**Категория**

- ✓ Выгодное предложение
- ✓ Гольф
- ✓ Дома для отдыха









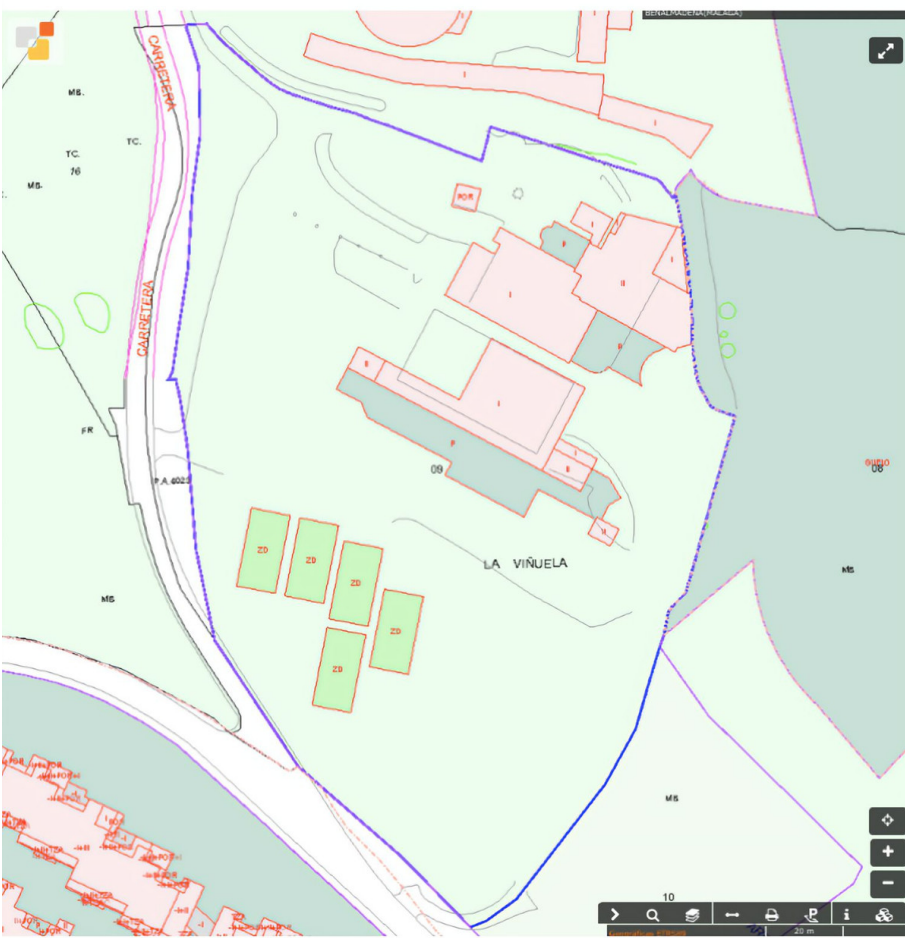


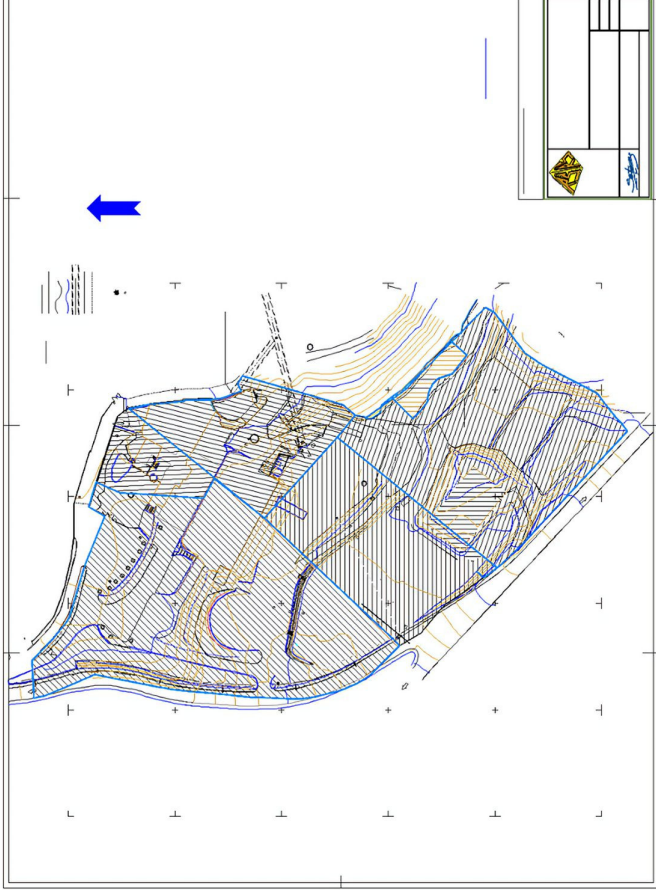












**BENALMÁDENA\***



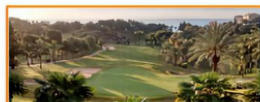
ESTUPA\*BUDISTA\*\*  
BENALMÁDENA\*PUEBLO\*



PUERTO\*MARINA



RESERVA\*DEL\*HIGUERÓN\*  
HOTEL\*HILTON\*



TORREQUEBRADA\*GOLF\*CLUB\*



HOTEL\*  
\*TORREQUEBRADA\*