

Ref.-ID: MIBGR4564255

Benahavís

Дом

Коммунальные: 4,092 EUR / год

ИБИ: 625 EUR / год



4



3



188 m2



64 m2

This is a lovely character semi-detached house inside the exclusive community of La Heredia de Monte Mayor, a unique gated residential community in a beautiful and natural setting, surrounded by mountains and panoramic views over the Mediterranean Sea. It is a corner house that offers high privacy, built over three levels. When you enter the main door you have a massive eye-catching high ceiling which entices you to discover more of what this cozy home has to offer. The main floor has a good-sized living area with a fireplace and a lot of natural light with direct access to the covered terrace that faces the mountains and the sea. A separate dining area is connected to the ample-sized independent kitchen, from where a staircase leads down to the pool and garden area. 1 Guest toilet as well next to the entrance hall. The upper level features two good-sized en-suite bedrooms. The master bedroom is impressive with its private terrace and panoramic views. The lower level comprises 2 bedrooms, one with an en-suite bathroom. You have direct access to the outside area which is well maintained and features a plunge pool, fruit trees, and a grass area, ideal for outside living. All rooms are spacious, and the home is built to a high standard with good finishes and well-maintained. Another feature, there is underfloor heating throughout the house. There is a community pool and garage for 1 car and storage. Within a gated community with 24-hour security. This house is full of character, it can be a nice family residential or a holiday home for rentals as it already has the tourist licenses in place. Welcome to book your viewing!

Расположение

- ✓ Рядом с гольф-полем

бассейн

- ✓ Приватный

Климат-контроль

- ✓ Кондиционер
- ✓ Камин

ВИД

- ✓ Море
- ✓ Горы
- ✓ Сельская местность
- ✓ Панорамный
- ✓ Сад

Особенности

- ✓ Крытая терраса
- ✓ Встроенные шкафы
- ✓ Приватная терраса
- ✓ Кладовка
- ✓ Ванная комната
- ✓ Барбекю
- ✓ Двойные стеклопакеты
- ✓ Ресторан на территории
- ✓ Подвал
- ✓ Оптическое волокно

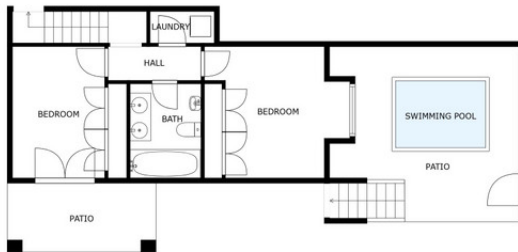
Мебель

- ✓ Без мебели



FLOOR 2

FLOOR 3



FLOOR 1

SIZES ARE APPROXIMATE, ACTUAL MAY VARY.













6u5vbuh1hk



6u5vbuh1hk









6u5vbuh1hk



6u5vbuh1hk



6u5vbuh1hk





