

Ref.-ID: MIBGR4618570

Entrerrios

Дом



Great opportunity, farm with 24,000m2 of land with its own water well legalized by the Junta de Andalucia, with two independent chalets legalized in the Entrerrios area, views of the sea and the mountains, southeast orientation and the other southwest, two swimming pools. Perfect lane access without any problem for any vehicle. 13 minutes from La Cala de Mijas and 16 minutes from the Miramar shopping center in Fuengirola. Chalet A, all on a single level distributed in living room, two full bathrooms, three bedrooms and kitchen, plus covered parking area for two cars and a terrace 100m2 solarium, and 30m2 pool. Chalet B, two levels, 4 bedrooms and three bathrooms, a large living room, large kitchen and another smaller living room, 100m2 terrace area and another type of solarium with sea views with 100m2 more. ... 50m2 pool. It is a farm that offers a great opportunity for investors or people looking for this type of property. There are 24,000m2 on two plots that go down to the river, it has several paths made that were previously usable by car, and it has several completely flat areas on the plot.

**Расположение**

- ✓ Загородный
- ✓ Рядом с морем

**Климат-контроль**

- ✓ Кондиционер

**Кухня**

- ✓ Полностью оборудованная

**Категория**

- ✓ Выгодное предложение
- ✓ Инвестиции
- ✓ Цена снижена

**ОРИЕНТАЦИЯ**

- ✓ Юго-восток
- ✓ Юго-запад

**ВИД**

- ✓ Море
- ✓ Горы
- ✓ Сельская местность
- ✓ Панорамный
- ✓ Бассейн

**Сад**

- ✓ Приватный

**Состояние**

- ✓ Среднее

**Особенности**

- ✓ Крытая терраса
- ✓ Встроенные шкафы
- ✓ Приватная терраса
- ✓ Солярий
- ✓ Подсобное помещение
- ✓ Джакузи
- ✓ Барбекю

**Парковка**

- ✓ С навесом
- ✓ Более чем один

**бассейн**

- ✓ Приватный

**Мебель**

- ✓ Частично меблированный

**Коммунальные услуги**

- ✓ Электричество
- ✓ Питьевая вода
- ✓ Телефон















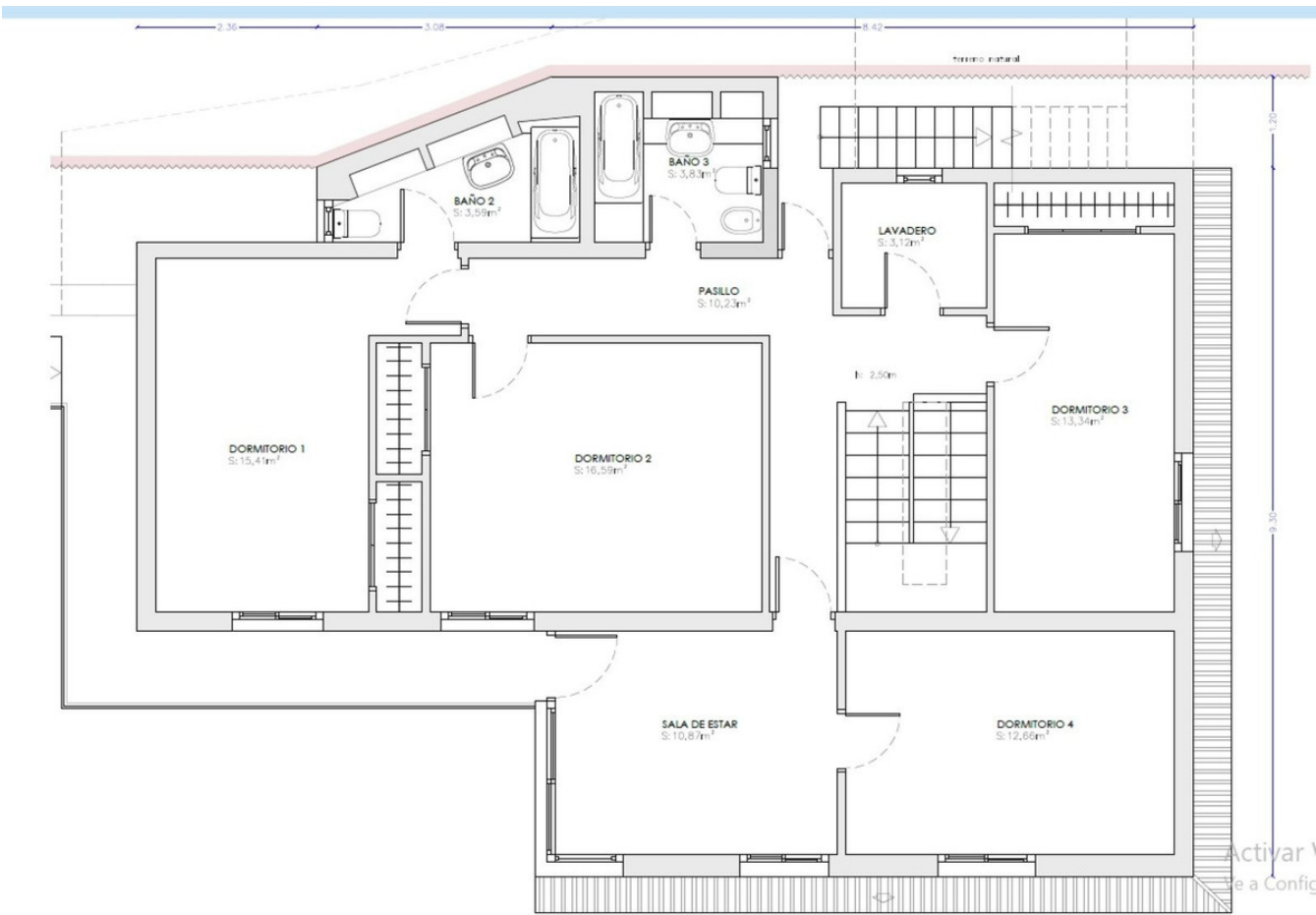


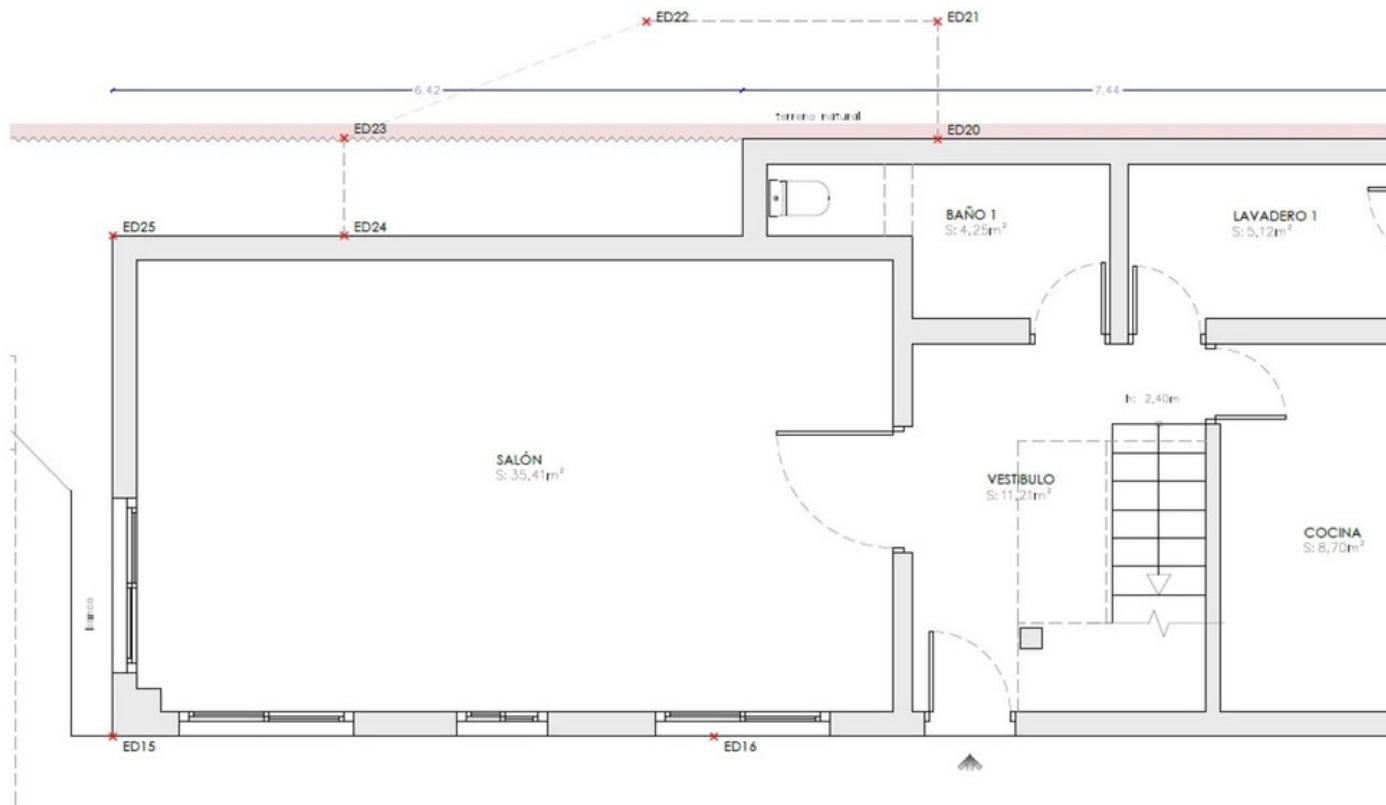












CUADRO SUPERFICIES ÚTILES POR PLANTA Y USO		
PLANTA/USO		SUPERFICIE
PLANTA BAJA		
Vivienda-B	Vestibulo	11,21m <sup>2</sup>
	Salón	35,41m <sup>2</sup>
	Cocina	8,70m <sup>2</sup>
	Baño 1	4,25m <sup>2</sup>
	C. Instalaciones	5,12m <sup>2</sup>
	Porche Cubierto	27,52m <sup>2</sup>
	TOTAL	92.21m <sup>2</sup>
PLANTA ALTA		
Vivienda-B	Pasillo	10,23m <sup>2</sup>
	Sala de Estar	10,87m <sup>2</sup>
	Dormitorio 1	15,41m <sup>2</sup>
	Dormitorio 2	16,59m <sup>2</sup>
	Dormitorio 3	13,34m <sup>2</sup>
	Dormitorio 4	12,66m <sup>2</sup>
	Baño 2	3,59m <sup>2</sup>
	Baño 3	3,83m <sup>2</sup>
	Lavadero	3,12m <sup>2</sup>
	TOTAL	89.64m <sup>2</sup>



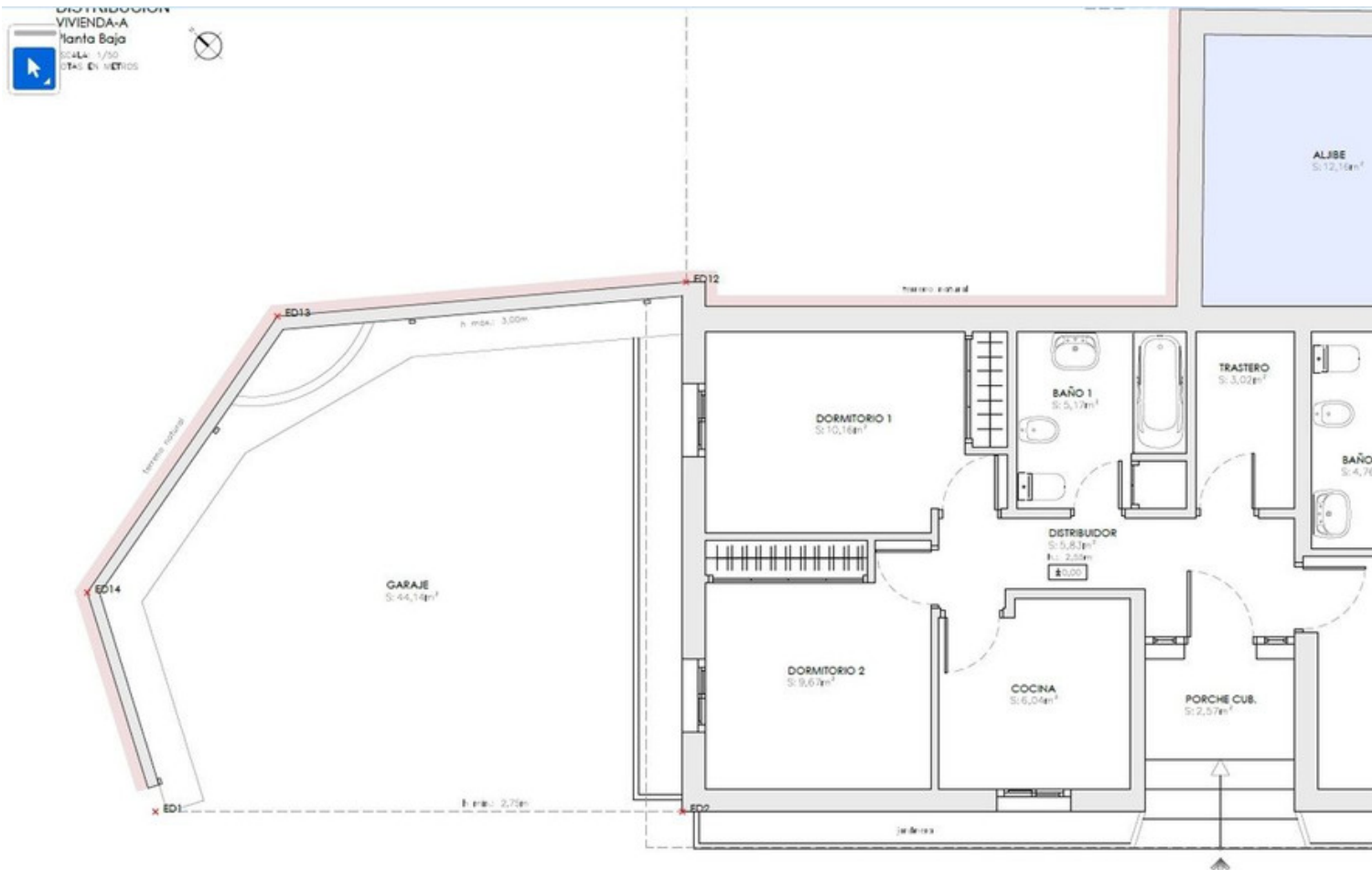


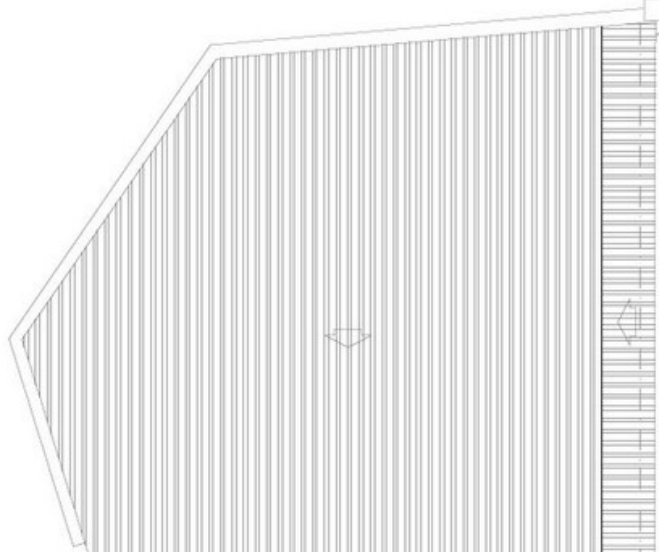












TERRAZA DESCUBIERTA  
 S: 136,99m<sup>2</sup>

CUADRO SUPERFICIES ÚTILES POR PLANTA Y USO		
PLANTA/USO	SUPERFICIE	
PLANTA BAJA		
Vivienda-A	Distribuidor	5,83m <sup>2</sup>
	Salón	16,68m <sup>2</sup>
	Dormitorio 1	10,16m <sup>2</sup>
	Dormitorio 2	9,67m <sup>2</sup>
	Dormitorio 3	10,72m <sup>2</sup>
	Cocina	6,04m <sup>2</sup>
	Baño 1	5,17m <sup>2</sup>
	Baño 2	4,76m <sup>2</sup>
	Trastero	3,02m <sup>2</sup>
	Porche Cubierto	2,57m <sup>2</sup>
	Garaje	44,14m <sup>2</sup>
	Almacén	10,54m <sup>2</sup>
	Aljibe	12,16m <sup>2</sup>
	TOTAL	141.46m <sup>2</sup>











