

Ref.-ID: MIBGR4620232

Fuengirola

Апартамент

Коммунальные: 2,616 EUR / год



2



1



67 m2

This modern apartment is located in a closed and secure community in Higueron West area. The apartment has two bedrooms and one bathroom. Open plan kitchen and living room lead to a good-sized covered terrace with great views both to the sea and the mountains. You can enjoy the sun until late in the evening. The apartment is highly equipped. Bathroom has a rain shower, marble tiles and underfloor heating. The price includes 2 parking spaces and a storage room. Communal areas have well maintained gardens and a swimming pool. There are pedestrian and bicycling routes near and even a park for the pets. All the services are nearby, also five-star hotel El Higueron with luxurious spa, gym, tennis and padel fields, restaurants, indoor and outdoor swimming pools and co-working area. Location and transportation connections are very good. It is 1,6 kilometres to the beach and 5 kilometres to the city of Fuengirola. The airport is 18,7 kilometres away. We are happy to give you more information about this beautiful apartment and lets' arrange a viewing!

Расположение

- ✓ Рядом с морем
- ✓ Рядом с городом
- ✓ Урбанизация

ОРИЕНТАЦИЯ

- ✓ Юго-запад
- ✓ Запад

Состояние

- ✓ Отличное

бассейн

- ✓ Общий

Климат-контроль

- ✓ Кондиционер
- ✓ Центральное отопление
- ✓ Полы с подогревом в ванной

ВИД

- ✓ Море
- ✓ Горы
- ✓ Сельская местность
- ✓ Сад

Особенности

- ✓ Крытая терраса
- ✓ Лифт
- ✓ Встроенные шкафы
- ✓ Рядом с транспортом
- ✓ Приватная терраса
- ✓ Доступ для инвалидов
- ✓ Двойные стеклопакеты

Мебель

- ✓ Без мебели

Кухня

- ✓ Полностью оборудованная

Сад

- ✓ Общественный

меры безопасности

- ✓ Огражденный комплекс
- ✓ Домофон
- ✓ Охрана 24 часа

Парковка

- ✓ Подземная
- ✓ Гараж
- ✓ С навесом
- ✓ Улица
- ✓ Более чем один
- ✓ Приватная

Категория

- ✓ Дома для отдыха
- ✓ Перепродажа















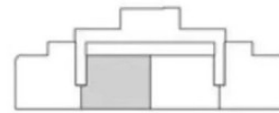
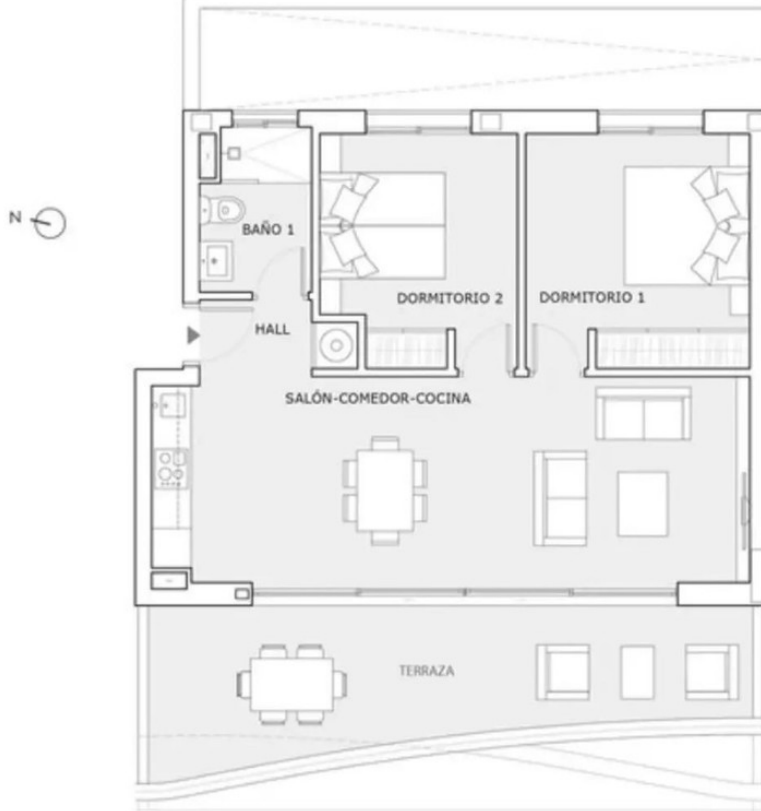












SUPERFICIES ÚTILES (m ²)	
Hall	2.46 m ²
Salón-Comedor-Cocina	28.69 m ²
Baño 1	3.98 m ²
Dormitorio 1	12.03 m ²
Dormitorio 2	10.03 m ²
Sup. Útil Total Interior	57.19 m²

Terraza Cubierta	17.42 m ²
Terraza Descubierta	1.44 m ²
Sup. Útil Total Exterior	18.86 m²

SUPERFICIES CONSTRUIDAS (m ²)	
Sup. Const. Total Int.	66.93 m ²
Sup. Const. Total Ext.	21.53 m ²



