

**Ref.-ID: MIBGR4688410**

**Benalmadena Pueblo**

**Дом**



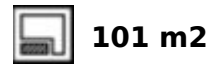
**3**



**3.5**



**246 m2**



**101 m2**

SEMI-DETACHED HOUSE with spectacular SEA VIEWS located in Benalmádena Pueblo, a short distance from the well-known La Fonda hotel. Great location, in a peaceful environment but at same time close to the centre of Benalmádena Pueblo. It is the opportunity to build the property of your dreams. The house is sold as seen in the pictures, so the future owner can finish it to his liking. Basement with space for 2 cars and storage space. It has 2 terraces, approximately 10 m2 each one, with beautiful views. Sunny and bright property, facing SOUTH. The distribution is as follows: -Basement: Garage with space for 2 cars and storage. -Ground floor: Living room with access to terrace, kitchen and toilet. -Middle floor: 2 bedrooms + 2 bathrooms (one of them en suite). Additionally, each bedroom has access to its own terrace. -Top floor: Master bedroom with en suite bathroom. Total size: 246 m2. Useful area: 200 m2. Floors: 4. Orientation: South. \*Distances: -Restaurants: 250 mts. -Benalmádena Pueblo centre: 300 mts. -Shops: 300 mts. -Benalmádena Pueblo Town Hall: 500 mts. -Beach: 2.5 km. -Málaga airport: 15 km.

**Расположение**

- ✓ Рядом с магазинами
- ✓ Рядом с городом
- ✓ Близко к школам

**Особенности**

- ✓ Крытая терраса
- ✓ Встроенные шкафы
- ✓ Рядом с транспортом
- ✓ Приватная терраса
- ✓ Кладовка
- ✓ Ванная комната
- ✓ Подвал

**ОРИЕНТАЦИЯ**

- ✓ Юг

**Мебель**

- ✓ Без мебели

**Состояние**

- ✓ Нужен ремонт

**Парковка**

- ✓ Гараж
- ✓ С навесом
- ✓ Приватная

**ВИД**

- ✓ Море
- ✓ Горы
- ✓ Панорамный

**Категория**

- ✓ Инвестиции











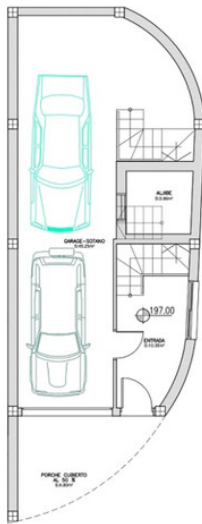




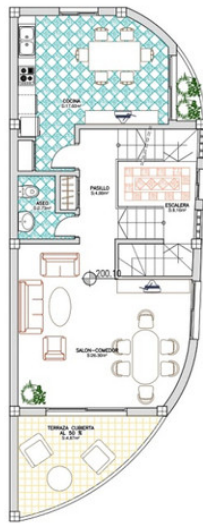




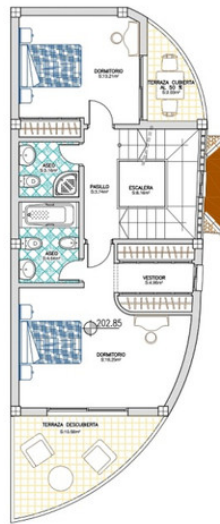




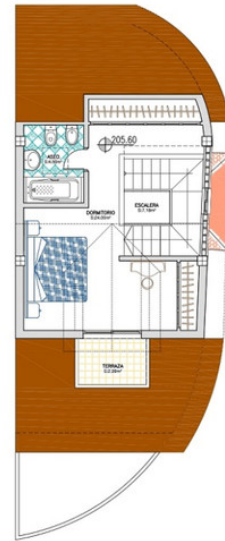
**PLANTA SOTANO MOBILIARIO**  
 SUP. CONSTRUIDA: 72.70m<sup>2</sup>  
 SUP. UTIL : 55.60m<sup>2</sup>  
 SUP. PORCHE CUBIERTO AL 50% : 4.80m<sup>2</sup>



**PLANTA BAJA MOBILIARIO**  
 SUP. CONSTRUIDA: 70.33m<sup>2</sup>  
 SUP. UTIL : 59.65m<sup>2</sup>  
 SUP. TERRAZA CUBIERTO AL 50% : 4.87m<sup>2</sup>



**PLANTA ALTA MOBILIARIO**  
 SUP. CONSTRUIDA: 67.62m<sup>2</sup>  
 SUP. UTIL : 56.12m<sup>2</sup>  
 SUP. TERRAZA DESCUBIERTA : 10.58m<sup>2</sup>  
 SUP. TERRAZA CUBIERTO AL 50% : 2.03m<sup>2</sup>



**PLANTA BAJO CUBIERTA MOBILIARIO**  
 SUP. CONSTRUIDA: 36.05m<sup>2</sup>  
 SUP. UTIL : 28.50m<sup>2</sup>  
 SUP. TERRAZA DESCUBIERTA : 2.99m<sup>2</sup>