

Ref.-ID: MIBGR4749100

Estepona

Дом



4



4



326 m2



570 m2

Nestled in the serene neighborhood of Buenas Noches, in Estepona West, this exquisite villa offers the perfect opportunity for you to build your dream home off-plan, influencing every single aspect of the project. Spanning a generous plot of 570m², and spread over 4 floors, the home will offer a built area of 326.65m² and expansive terraces of 117m², providing ample space for both relaxation and entertainment. The property will boast 4 spacious bedrooms and 3 well-appointed bathrooms, complemented by two additional toilets. The master bedroom will include a walk-in closet, providing ample storage space. The bathrooms will be fitted with high-quality fixtures that you can decide yourself. The basement floor will feature a cinema room, a cellar and a garage for 2 cars, while the roof top floor will offer entertainment space with jacuzzi, gym and BBQ chill-out area. The terraces will offer stunning mountain views and partial sea views, being an excellent spot for outdoor dining or simply enjoying the Mediterranean climate, enhancing the tranquil ambiance of the property. The villa will be equipped with modern amenities such as air conditioning, underfloor heating, electric blinds, and a lift. Additional features of this villa include a private pool and garden, perfect for outdoor leisure activities, basement, storage room, and a wine cellar, catering to various storage needs. Fitness enthusiasts will appreciate the on-site gym, while the cinema room offers entertainment options for the whole family. The villa's prime location ensures easy access to the beach and nearby golf courses, making it an ideal choice for those seeking a tranquil yet convenient lifestyle. With its proximity to the town and various amenities, this villa in Buenas Noches, Estepona West, is a perfect blend of elegance and practicality.

Расположение

- ✓ Рядом с морем
- ✓ Рядом с городом

Климат-контроль

- ✓ Кондиционер
- ✓ Камин

Сад

- ✓ Приватный

ОРИЕНТАЦИЯ

- ✓ Юг

ВИД

- ✓ Горы
- ✓ Сад
- ✓ Бассейн

меры безопасности

- ✓ Электрические жалюзи

Состояние

- ✓ Новое строительство

Особенности

- ✓ Крытая терраса
- ✓ Лифт
- ✓ Встроенные шкафы
- ✓ Приватная терраса
- ✓ Солярий
- ✓ Тренажерный зал
- ✓ Кладовка
- ✓ Подсобное помещение
- ✓ Ванная комната
- ✓ Джакузи
- ✓ Барбекю

Парковка

- ✓ Приватная

бассейн

- ✓ Приватный

Кухня

- ✓ Полностью оборудованная
- ✓ Частично оборудованная

Категория

- ✓ Элитная





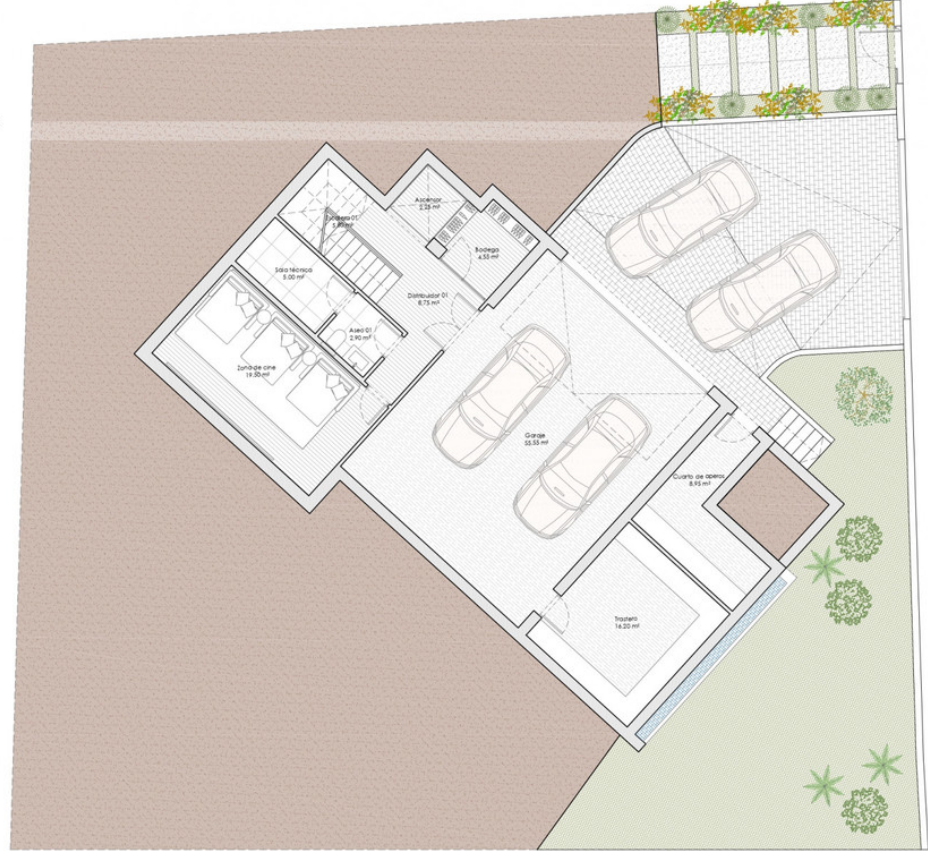




PLANTA SÓTANO



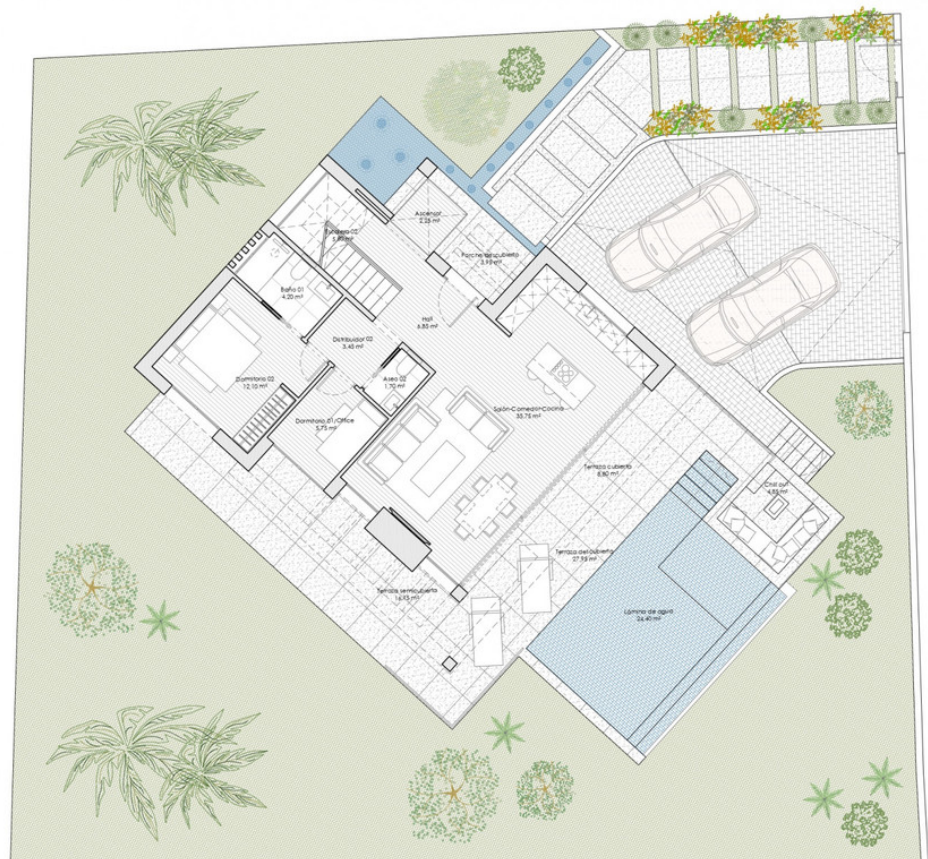
Superficie construida 152,00 m²



PLANTA BAJA



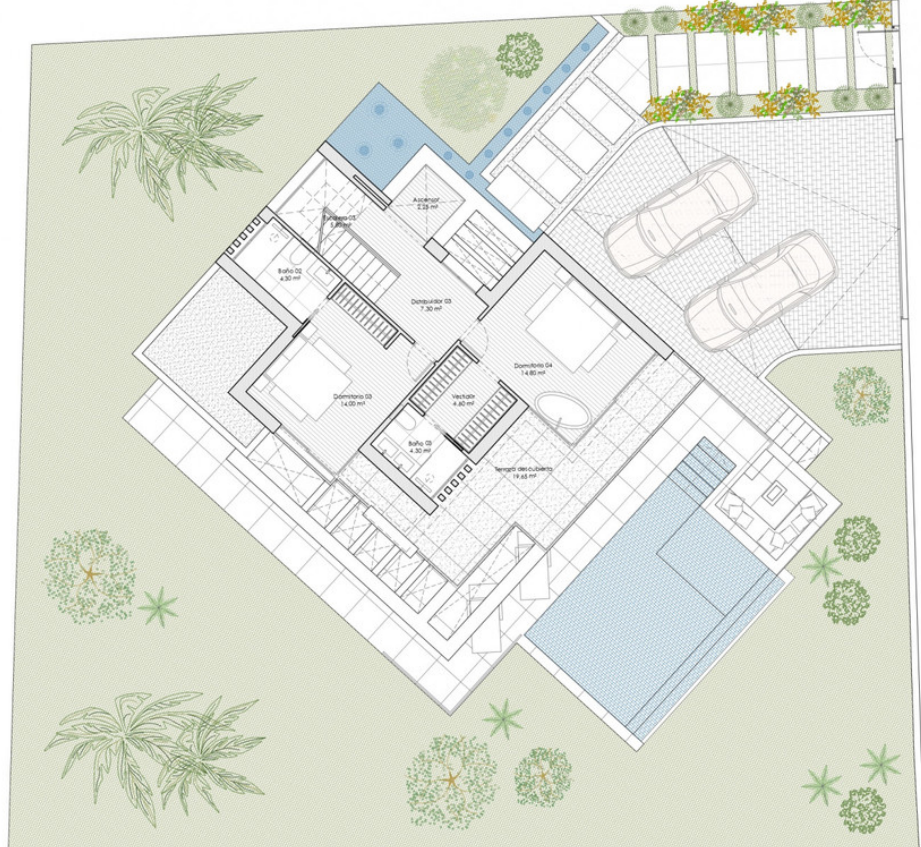
Superficie construida 92,45 m²



PLANTA ALTA

Superficie construida

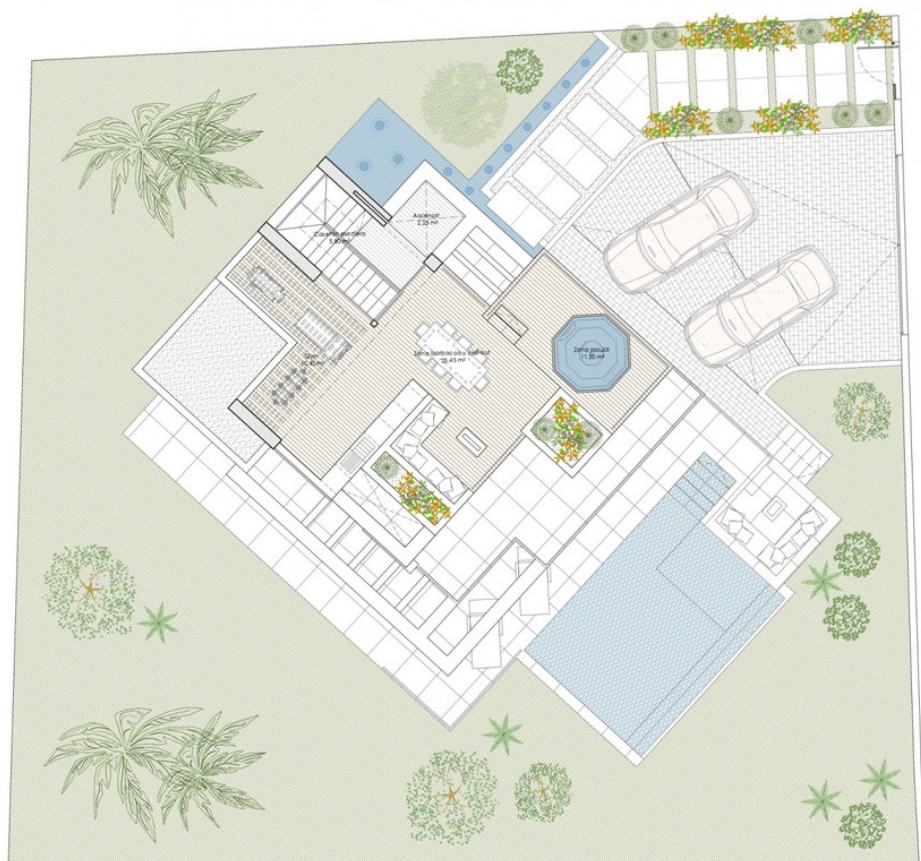
69,00 m²



PLANTA AZOTEA

Superficie construida

13,20 m²



PLANTA CUBIERTA

