

Ref.-ID: MIBGR4753687

Estepona

Апартамент

Коммунальные: 1,344 EUR / год



Central Living from Above! To find a brand new modern penthouse with a rooftop terrace that allows you to walk to the Old Town of Estepona in 5 minutes is quite rare. This property boasts all the features needed for modern living with a few features that will delight you. It offers 2 Bedrooms, 2 Bathrooms, with 77m2 built and more than 50m2 of outside space. We have the developers floor plans. Furthermore, you have 1 underground parking space and a storage room. What is really interesting is that furniture as well as a jacuzzi, all brand new, is included. The furniture has been chosen at a considerable expense and offers you are an immediate holiday home or rental business with an attached property manager should you wish. Lastly, as this is a new property being resold, there is less to pay in taxes and all snagging has been completed. The community offers a large pool, outdoor gym, as well as kids playground and an indoor gym to come. Estepona is such an interesting place to invest right now, winning awards, with the fantastic mayor continuing to make it one of the top destinations in Southern Europe. Come get some!

**Расположение**

- ✓ Город
- ✓ Рядом с магазинами
- ✓ Урбанизация

**Климат-контроль**

- ✓ Кондиционер

**Кухня**

- ✓ Полностью оборудованная

**Коммунальные услуги**

- ✓ Электричество

**ОРИЕНТАЦИЯ**

- ✓ Юг

**ВИД**

- ✓ Горы
- ✓ Город

**Сад**

- ✓ Общественный

**Категория**

- ✓ Дома для отдыха
- ✓ Перепродажа
- ✓ Современного

**Состояние**

- ✓ Отличное
- ✓ Новое строительство

**Особенности**

- ✓ Лифт
- ✓ Встроенные шкафы
- ✓ Рядом с транспортом
- ✓ Приватная терраса
- ✓ Ванная комната

**меры безопасности**

- ✓ Огражденный комплекс
- ✓ Домофон

**бассейн**

- ✓ Общий

**Мебель**

- ✓ Полностью меблированный

**Парковка**

- ✓ Подземная







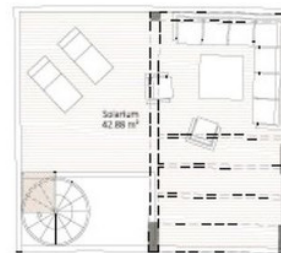












C/ DÁMASO ALONSO  
Estepona, Málaga

**BLOQUE 6**  
Planta Tercera. Vivienda B



SUPERFICIES	m <sup>2</sup>
ÚTIL CERRADA	6504
ÚTIL EXTERIOR	5029
ÚTIL TOTAL (w/Decreto 218/2005)	7203
CONSTRUIDA CERRADA	7123
CONSTRUIDA EXTERIOR (Lavadero + Terraza)	1152
CONSTRUIDA + Z.C. (w/Decreto 218/2005)	1642
CONSTRUIDA + Z.C.	807

Escala Gráfica 1:100



GESTIONA



PROMUEVE

HERRERA RESIDENCIAS  
SEJIRA DE ESTEPOÑA, S.L.U.