

Ref.-ID: MIBGR4767493

Marbella

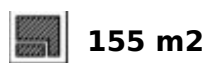
Апартамент



3



3



155 m2

Move-in ready 3 bedroom penthouse with luxury roof terrace for 1,450,000 This move-in ready penthouse features three bedrooms with beautiful views. The kitchen and living room, which blend seamlessly, are luxuriously and modernly furnished. This layout allows you to maximize the spaces, with a total indoor living space of 155 m². The living room in turn flows into the huge terrace of more than 175m², combined with 150m² of solarium, thanks to the large sliding windows. In addition, there is a rooftop terrace where you can enjoy stunning views and stylish decor that continues the luxurious and spacious feeling outside. These terraces offer the possibility of placing jacuzzi or plunge pool. This penthouse is available for 1,450,000 excluding furniture. Palo Alto is an exclusive hilltop community with beautiful, uninterrupted views of the Mediterranean Sea. A place where you will be able to enjoy the exclusive things in life like horseback riding in the hills, relaxing by the infinity pool and sipping cocktails on the terrace of your beautiful apartment. The Palo Alto estate is 50 hectares, of which only 20% will be cultivated, so you will always be in a green and natural environment. A unique master plan includes: - concierge service - health club - equestrian facilities - restaurants - a farmer's market - tennis courts - swimming pools - a social club - a kids club - a shared workspace - large common areas

Расположение

- ✓ Урбанизация

ОРИЕНТАЦИЯ

- ✓ Юго-запад

Состояние

- ✓ Отличное
- ✓ Новое строительство

бассейн

- ✓ Общий
- ✓ С подогревом
- ✓ Место для бассейна
- ✓ Детский бассейн

Климат-контроль

- ✓ Кондиционер
- ✓ Кондиционер холодного воздуха
- ✓ Полы с подогревом
- ✓ Полы с подогревом в ванной

ВИД

- ✓ Море
- ✓ Горы
- ✓ Панорамный

Особенности

- ✓ Крытая терраса
- ✓ Лифт
- ✓ Встроенные шкафы
- ✓ Приватная терраса
- ✓ Солярий
- ✓ WiFi
- ✓ Тренажерный зал
- ✓ Сауна
- ✓ Теннисный корт
- ✓ Кладовка
- ✓ Ванная комната
- ✓ Двойные стеклопакеты
- ✓ Умный дом
- ✓ Ресторан на территории
- ✓ Оптическое волокно

Мебель

- ✓ Полностью меблированный
- ✓ По желанию

Кухня

- ✓ Полностью оборудованная

Сад

- ✓ Общественный

меры безопасности

- ✓ Огражденный комплекс
- ✓ Охрана 24 часа

Парковка

- ✓ Подземная
- ✓ Гараж

Коммунальные услуги

- ✓ Электричество
- ✓ Питьевая вода
- ✓ Телефон
- ✓ Газ

Категория

- ✓ Дома для отдыха
- ✓ Инвестиции
- ✓ Элитная









































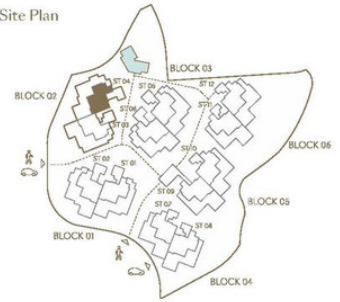


Las Jacarandas
3 Bedroom Apartment

APT // 04.2.1



Site Plan



Block | 02

Solarium		Solarium	
04.2.1	03.2.1	03.1.1	03.0.1
04.1.2	04.1.1	03.1.2	03.0.2
04.0.2	04.0.1	03.0.2	03.0.1
SI 04-1 (LIFT)		SI 03-1 (LIFT)	

Apartment | 04.2.1

Indoor Usable Area	127,96 m²
Terrace Usable Area	150,83 m²
Total Usable Area	278,80 m²

Indoor Constructed Area	155,13 m²
Terrace Constructed Area	175,15 m²
Total Constructed Area	330,29 m²

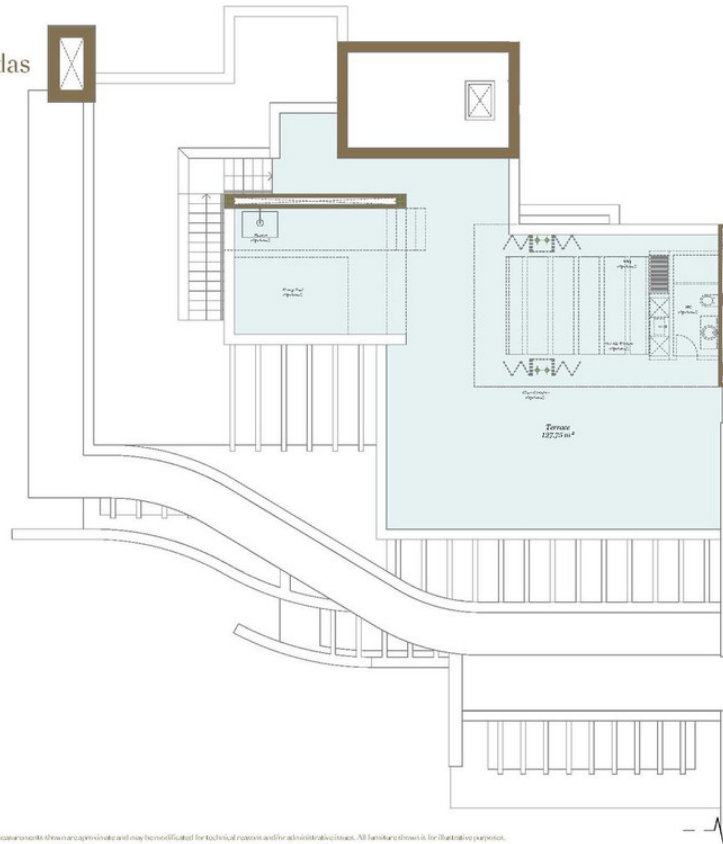
Garden (C.A.w.E.U.)



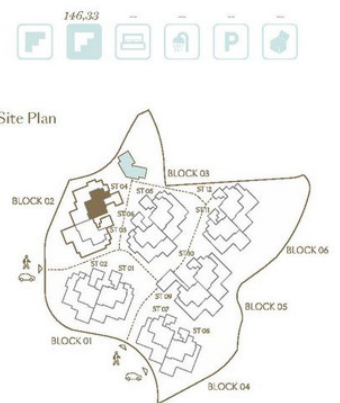
PM21-ES4-2.1-DR-4

This document is for information only. The areas and measurements shown are approximate and may be used for technical reasons and for administrative issues. All furniture shown is for illustrative purposes.
*MPI: Apartment // SOL: Solarium // B/B: Basement // Apartment Code: Stairway - Floor - Apartment // C.A.W.E.U.: Common Area With Excluded Use

Las Jacarandas
Solarium
SOL // 04.2.1



Site Plan



Block | 02

Solarium		Solarium	
04.2.1	03.2.1	03.1.1	03.0.1
04.1.2	04.1.1	03.1.2	03.0.2
04.0.2	04.0.1	03.0.2	03.0.1
SI 04-1 (LIFT)		SI 03-1 (LIFT)	

Solarium | 04.2.1

Indoor Usable Area	127,75 m²
Terrace Usable Area	127,75 m²
Total Usable Area	255,50 m²

Indoor Constructed Area	146,33 m²
Terrace Constructed Area	146,33 m²
Total Constructed Area	292,66 m²

Garden (C.A.w.E.U.)



This document is for information only. The areas and measurements shown are approximate and may be used for technical reasons and for administrative issues. All furniture shown is for illustrative purposes.
*MPI: Apartment // SOL: Solarium // B/B: Basement // Apartment Code: Stairway - Floor - Apartment // C.A.W.E.U.: Common Area With Excluded Use





