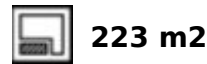


Ref.-ID: MIBGR4778893

Los Pacos

Дом



Large 4-Story Townhouse in Los Pacos. Located in the coveted neighborhood of Los Pacos, Fuengirola. This impressive home stands as a testimony of elegance and comfort. In immaculate condition, this property offers a unique living experience. Main Features: Basement:- Private garage for 2 vehicles.- Large open area, currently used as a gym.- Storage room Low level:- Garden and entrance porch that welcome you with charm.- Entrance hall leading to an elegant hall and staircase.- Toilet for greater comfort.- Fully equipped kitchen-dining room.- Living room that opens to a charming internal patio. First floor:- Distributor that connects three cozy rooms.- Two bathrooms, one of them en suite in the main room for a touch of luxury. Attic Floor:- Versatile studio that lends itself to various possibilities.- Rooftop. Exteriors:- Independent access with own garage ramp.- Front garden that adds charm to the facade.- Backyard/garden of 29 m2 to enjoy outdoor moments. Dimensions:- Constructed area of 223 m2 plus 55 m2 of access. It also has solar panels for maximum energy efficiency. Don't miss the opportunity to make this fabulous home yours! Request a visit today. The abbreviated information document is available to you. Expenses: Taxes (ITP or VAT+AJD) + Notarial and registration expenses. RSR

**Климат-контроль**

- ✓ Кондиционер
- ✓ Центральное отопление

**Особенности**

- ✓ Крытая терраса
- ✓ Приватная терраса
- ✓ Кладовка

**Коммунальные услуги**

- ✓ Питьевая вода















































































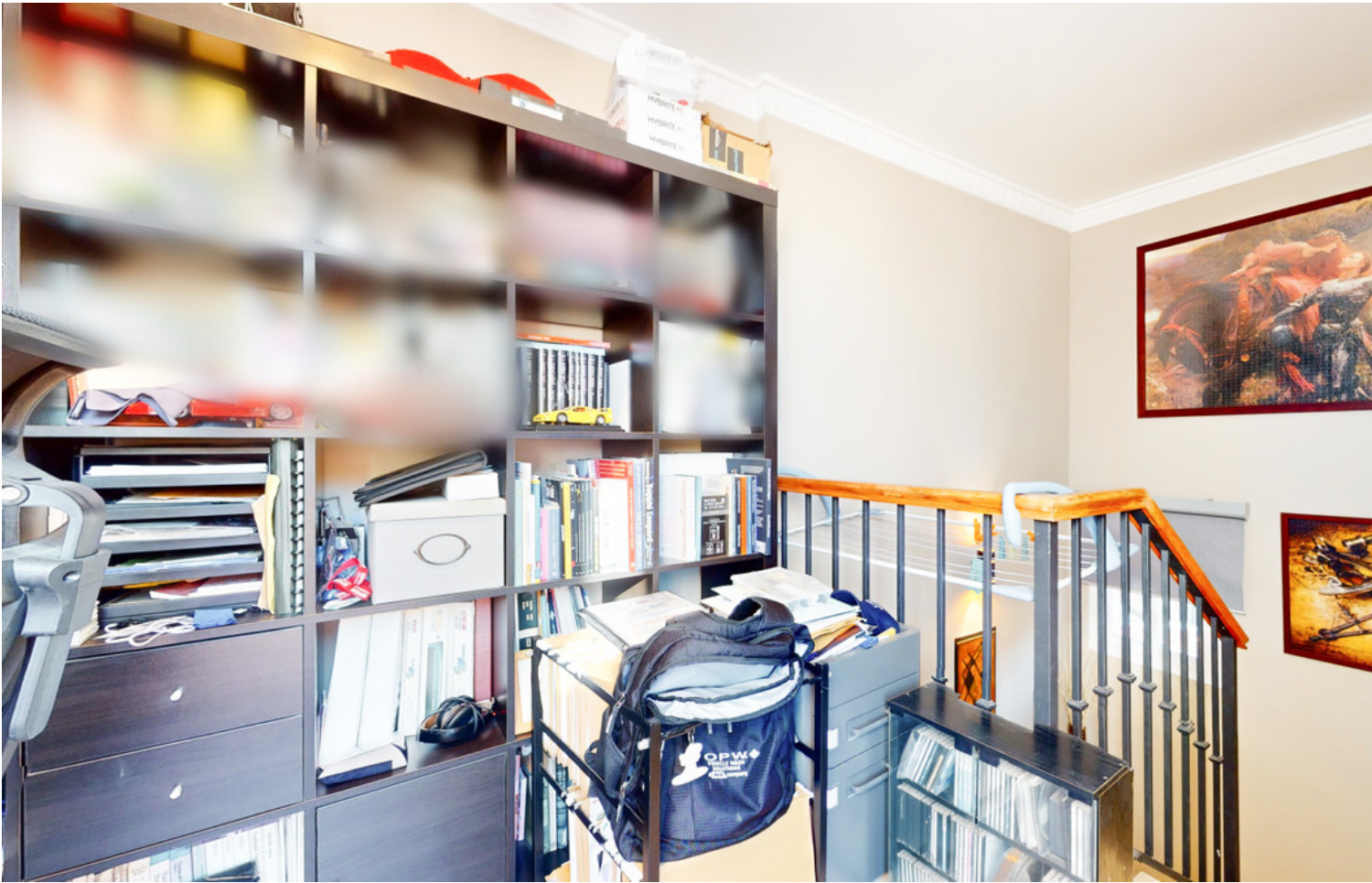








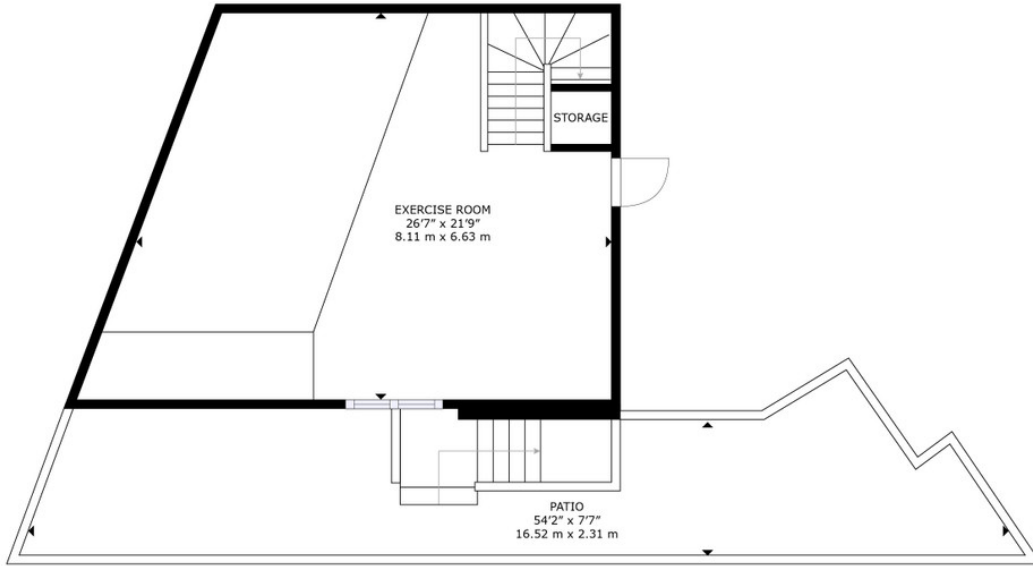








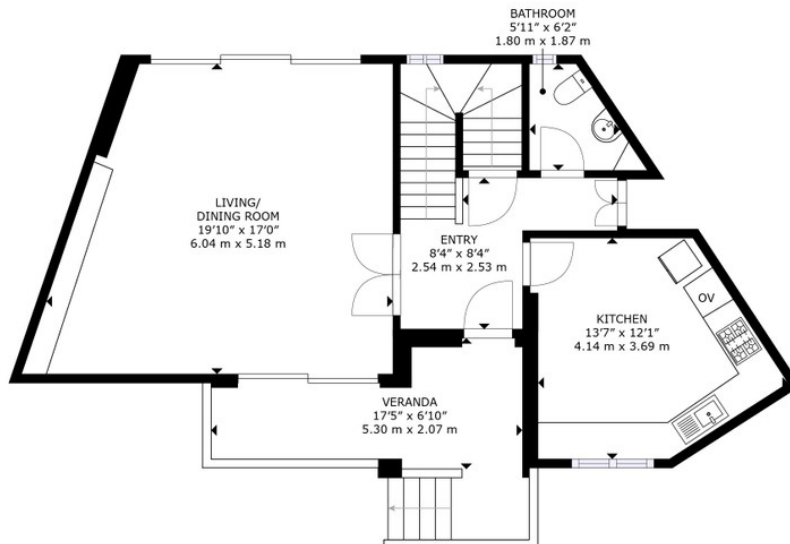




GROSS INTERNAL AREA  
 FLOOR 1: 570 sq. ft, 53 m<sup>2</sup>; FLOOR 2: 620 sq. ft, 57 m<sup>2</sup>;  
 FLOOR 3: 680 sq. ft, 63 m<sup>2</sup>; FLOOR 4: 121 sq. ft, 11 m<sup>2</sup>  
 TOTAL: 1,991 sq. ft, 184 m<sup>2</sup>  
 EXCLUDED AREAS: VERANDA: 121 sq. ft, 11 m<sup>2</sup>; PATIO: 424 sq. ft, 39 m<sup>2</sup>  
 TERRACE: 197 sq. ft, 18 m<sup>2</sup>  
 SIZES AND DIMENSIONS ARE APPROXIMATE, ACTUAL MAY VARY.



FLOOR 1



GROSS INTERNAL AREA  
 FLOOR 1: 570 sq. ft, 53 m<sup>2</sup>; FLOOR 2: 620 sq. ft, 57 m<sup>2</sup>;  
 FLOOR 3: 680 sq. ft, 63 m<sup>2</sup>; FLOOR 4: 121 sq. ft, 11 m<sup>2</sup>  
 TOTAL: 1,991 sq. ft, 184 m<sup>2</sup>  
 EXCLUDED AREAS: VERANDA: 121 sq. ft, 11 m<sup>2</sup>; PATIO: 424 sq. ft, 39 m<sup>2</sup>  
 TERRACE: 197 sq. ft, 18 m<sup>2</sup>  
 SIZES AND DIMENSIONS ARE APPROXIMATE, ACTUAL MAY VARY.



FLOOR 2