

Ref.-ID: MIBGR4827652

Marbella

Апартамент



3



2



135 m2



188 m2

3 bedroom apartment available with southern exposure. This apartment features an open layout where the kitchen and living room open onto the terrace and you can enjoy maximum views from these areas. Moreover, the terraces are also extended by private gardens that surround the apartment. The master bedroom has an en-suite dressing room and bathroom. There is also a second bathroom for the guest bedrooms. Like all apartments at here, this unit is finished to a very high standard. This apartment forms part of an exclusive hilltop community with beautiful, uninterrupted views of the Mediterranean Sea. A place where you will be able to enjoy the exclusive things in life like horseback riding in the hills, relaxing by the infinity pool and sipping cocktails on the terrace of your beautiful apartment. This estate is 50 hectares, of which only 20% will be cultivated, so you will always be in a green and natural environment.

Расположение

- ✓ Урбанизация

ОРИЕНТАЦИЯ

- ✓ Юго-восток
- ✓ Юг

Состояние

- ✓ Отличное
- ✓ Новое строительство

бассейн

- ✓ Общий
- ✓ Закрытый
- ✓ С подогревом

Климат-контроль

- ✓ Кондиционер

ВИД

- ✓ Море
- ✓ Горы

Особенности

- ✓ Лифт
- ✓ Встроенные шкафы
- ✓ Приватная терраса
- ✓ WiFi
- ✓ Тренажерный зал
- ✓ Сауна
- ✓ Теннисный корт
- ✓ Кладовка
- ✓ Ванная комната
- ✓ Двойные стеклопакеты

Мебель

- ✓ Без мебели

Кухня

- ✓ Полностью оборудованная

Сад

- ✓ Общественный
- ✓ Приватный

меры безопасности

- ✓ Огражденный комплекс
- ✓ Охрана 24 часа

Парковка

- ✓ Подземная
- ✓ Гараж
- ✓ Приватная

Коммунальные услуги

- ✓ Электричество
- ✓ Питательная вода
- ✓ Телефон
- ✓ Газ

Категория

- ✓ Дома для отдыха
- ✓ Инвестиции
- ✓ Перепродажа









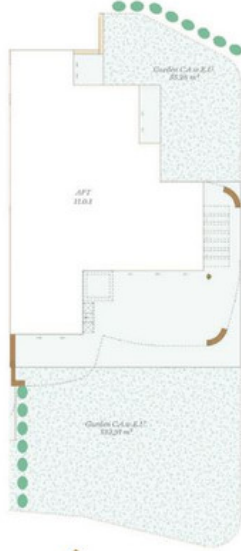


Finishes and furniture shown in this image are used for illustrative purposes. Consult your Sales Adviser in respect of standard materials and optional upgrades.



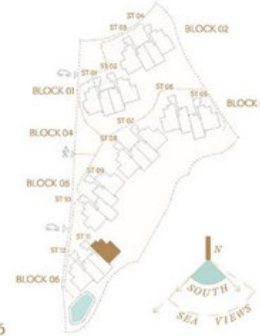
Finishes and furniture shown in this image are used for illustrative purposes. Consult your Sales Adviser in respect of standard materials and optional upgrades.

3 Bedroom Apartment APT // 11.0.1



135,17 84,55 3 2,5 1 1

Site Plan



Block 06

Subareas		Solarium	
	12.2.1	11.2.1	
12.1.2	12.2.2	11.2.2	11.1.1
12.0.2	12.0.1	11.0.2	11.0.1

ST 12 - 11.0.1 ST 11 - 11.0.1

Apartment | 11.0.1

Indoor Usable Area	111,30 m ²
Terrace Usable Area	84,49 m ²
Total Usable Area	195,79 m²
Total Usable Area (D 218/2005)	122,43 m²

Indoor Constructed Area	135,17 m ²
Terrace Constructed Area	84,55 m ²
Total Constructed Area	219,72 m²

Garden (C.A.u.E.U.)	188,18 m ²
PM11-ES11-01-DR-3	

0 1 2 3 4 5 E: 1/1000

This document is for information only. The sizes and measurements shown are approximate and can be modified for technical reasons and/or administrative issues. All furniture shown is for illustrative purposes only. The lighting is designed in line with the furniture layout displayed.
 *APT: Apartment // SOL: Solarium // BAO: Basement // Apartment Code: Stairway - Floor - Apartment // C.A.W.E.U.: Common Area With Exclusive Use