

Ref.-ID: MIBGR4839871

Coín

Дом

ИБИ: 718 EUR / год



3



2



191 m2



634 m2

A charming three-bedroom villa with the potential to create a fourth bedroom is located on a very residential urbanisation (Miralmonte) on the outskirts of the village (on a bus route) and close to the neighbouring pueblo of Alhaurin El Grande. The property comprises a covered terrace, conservatory, open lounge/diner with feature fireplace, fully fitted kitchen, three double bedrooms with fitted wardrobes, family bathroom with large walk-in shower, and guest shower room. There is a large room accessed from the outside that would easily convert into a fourth bedroom and benefit from a large storage room. Outdoors is a private swimming pool with a retractable cover to help retain the heat and keep the water clean, as well as various private seating areas with low maintenance gardens and a storage room. The features include fitted wardrobes, a feature fireplace, storage, double glazing, air conditioning, private parking, an automatic entrance gate, a conservatory, water storage, close to transport and a covered terrace. The property is in a great location, benefiting from several restaurants within walking distance, both the coast and Malaga airport within a 30-minute drive. An early inspection is highly recommended to appreciate this well presented property. Detached Villa, Coín, Costa del Sol. 3 Bedrooms, 2 Bathrooms, Built 191 m², Garden/Plot 634 m². Setting : Urbanisation. Condition : Excellent. Pool : Private. Climate Control : Air Conditioning, Fireplace. Views : Mountain, Country, Panoramic, Garden, Pool. Features : Covered Terrace, Fitted Wardrobes, Near Transport, Private Terrace, Storage Room. Furniture : Optional. Garden : Private. Parking : Open, More Than One, Private. Utilities : Electricity. Category : Resale.

Расположение

✓ Урбанизация

Состояние

✓ Отличное

бассейн

✓ Приватный

Климат-контроль

✓ Кондиционер
✓ Камин

ВИД

✓ Горы
✓ Сельская местность
✓ Панорамный
✓ Сад
✓ Бассейн

Особенности

✓ Крытая терраса
✓ Встроенные шкафы
✓ Рядом с транспортом
✓ Приватная терраса
✓ Кладовка

Мебель

✓ По желанию

Сад

✓ Приватный

Парковка

✓ Открытая
✓ Более чем один
✓ Приватная

Коммунальные услуги

✓ Электричество

Категория

✓ Перепродажа





















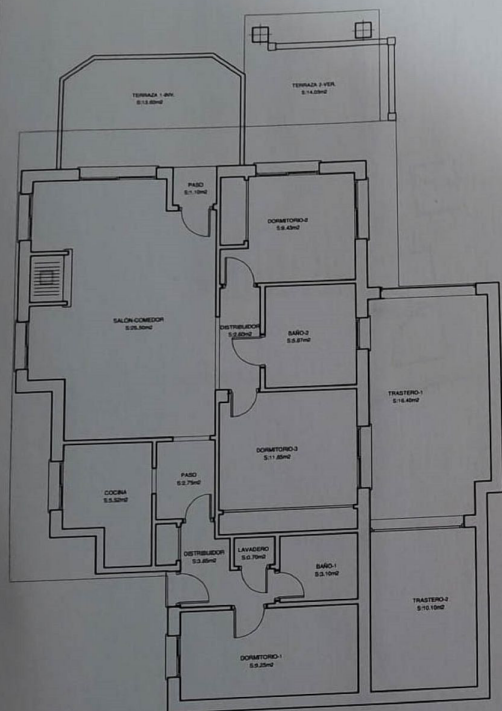












PLANTA BAJA VIVIENDA

SUPERFICIE CONSTRUIDA CERRADA VIVIENDA: 100.33 M²
 SUPERFICIE CONSTRUIDA CERRADA TRASTEROS: 32.20 M²
 SUPERFICIE CONSTRUIDA CERRADA TERRAZA-INVERNO: 13.80 M²
 SUPERFICIE CONSTRUIDA TERRAZA-VERANO: 14.05 M²