

Ref.-ID: MIBGR4901629

Marbesa

Дом



Experience Unmatched Elegance and Luxury in Your Dream Home! We are delighted to introduce a remarkable new single-family residence that sets a new standard for refined living. This extraordinary property merges timeless design with modern sophistication, creating a lifestyle of comfort and elegance for discerning buyers. All necessary permits and licenses have been granted, ensuring a smooth transition to the construction phase without delays. This critical milestone paves the way for the realization of your dream home. -Exceptional Design Situated on a 950m<sup>2</sup> plot, this project features 591m<sup>2</sup> of impeccably designed living space, enhanced by 280m<sup>2</sup> of terraces perfect for relaxation or entertaining. LAYOUT -Ground Floor: Includes a bedroom with an ensuite bathroom, a flexible office/TV room (convertible into a sixth bedroom), a guest lavatory, and a spacious open-plan living, dining, and kitchen area designed for modern lifestyles. - First Floor: Comprises two beautifully crafted bedrooms with ensuite bathrooms and access to private terraces. The master suite includes a dressing room, a luxurious bathroom, and a 47m<sup>2</sup> private terrace, offering a personal retreat. - Basement Level: Boasts a garage for two large vehicles and an additional smaller car, a laundry room, staff accommodations, and a luxurious cinema/spa room. -Rooftop Terrace: A 130m<sup>2</sup> rooftop terrace stands out as a highlight, with a partially covered outdoor kitchen and bar, dining area, lounge, sunbeds, and a rooftop jacuzzi with breathtaking sea views. Unmatched Convenience A private elevator, along with an indoor staircase, provides seamless access to all levels, from the basement to the rooftop terrace. The Essence of Luxury This exceptional home embodies the ultimate in refined living, offering privacy, exclusivity, and tranquility in one of Marbella's most desirable locations. It is the perfect choice for those who value contemporary luxury paired with timeless elegance. Prime Location in Marbesa, Marbella Nestled in the prestigious Marbesa area, just 200 meters from the Mediterranean Sea and adjacent to a tranquil park, this property enjoys an enviable setting. Surrounded by lush greenery rather than neighboring homes, the residence offers a serene and private atmosphere. Marbesa is a hidden gem in Marbella, celebrated for its dynamic lifestyle. Located near Elviria, the area is home to the renowned Nikki Beach, the iconic Hotel Don Carlos, fine dining establishments, chic boutiques, pristine beaches, and world-class golf courses. Additionally, the charming Cabopino Yacht Harbor is a short drive away. This exclusive neighborhood is undergoing a renaissance, with vintage holiday homes from the 1960s and 1970s being replaced by modern architectural masterpieces, making it an ideal destination for discerning property buyers. Contact us today to learn more about this extraordinary property.

**Расположение**

- ✓ Пригородная
- ✓ На побережье
- ✓ Рядом с магазинами
- ✓ Рядом с морем
- ✓ Близко к школам

**Климат-контроль**

- ✓ Кондиционер
- ✓ Пре-установленный
- ✓ Кондиционер холодного воздуха
- ✓ Кондиционер горячего воздуха
- ✓ Центральное отопление
- ✓ Камин
- ✓ Полы с подогревом
- ✓ Полы с подогревом в ванной

**Кухня**

- ✓ Полностью оборудованная

**Коммунальные услуги**

- ✓ Электричество
- ✓ Питьевая вода
- ✓ Телефон
- ✓ Фотоэлектрические солнечные панели

**ОРИЕНТАЦИЯ**

- ✓ Юго-восток
- ✓ Юг
- ✓ Юго-запад

**ВИД**

- ✓ Море
- ✓ Сад
- ✓ Бассейн

**Сад**

- ✓ Приватный
- ✓ Ландшафтный дизайн
- ✓ Простой в уходе

**Категория**

- ✓ Гольф
- ✓ Дома для отдыха
- ✓ Инвестиции
- ✓ Элитная
- ✓ Строительство не завершено
- ✓ С разрешением на строительство
- ✓ Современного

**Состояние**

- ✓ Отличное
- ✓ Новое строительство

**Особенности**

- ✓ Крытая терраса
- ✓ Лифт
- ✓ Встроенные шкафы
- ✓ Приватная терраса
- ✓ Солярий
- ✓ WiFi
- ✓ Тренажерный зал
- ✓ Сауна
- ✓ Игровая комната
- ✓ Кладовка
- ✓ Подсобное помещение
- ✓ Ванная комната
- ✓ Деревянные полы
- ✓ Доступ для инвалидов
- ✓ Джакузи
- ✓ Бар
- ✓ Двойные стеклопакеты
- ✓ Умный дом
- ✓ Размещение персонала
- ✓ Подвал
- ✓ Оптическое волокно

**меры безопасности**

- ✓ Сигнализация
- ✓ Сейф

**бассейн**

- ✓ Приватный
- ✓ С подогревом

**Мебель**

- ✓ По желанию

**Парковка**

- ✓ Подземная
- ✓ Гараж
- ✓ С навесом
- ✓ Улица
- ✓ Более чем один
- ✓ Приватная











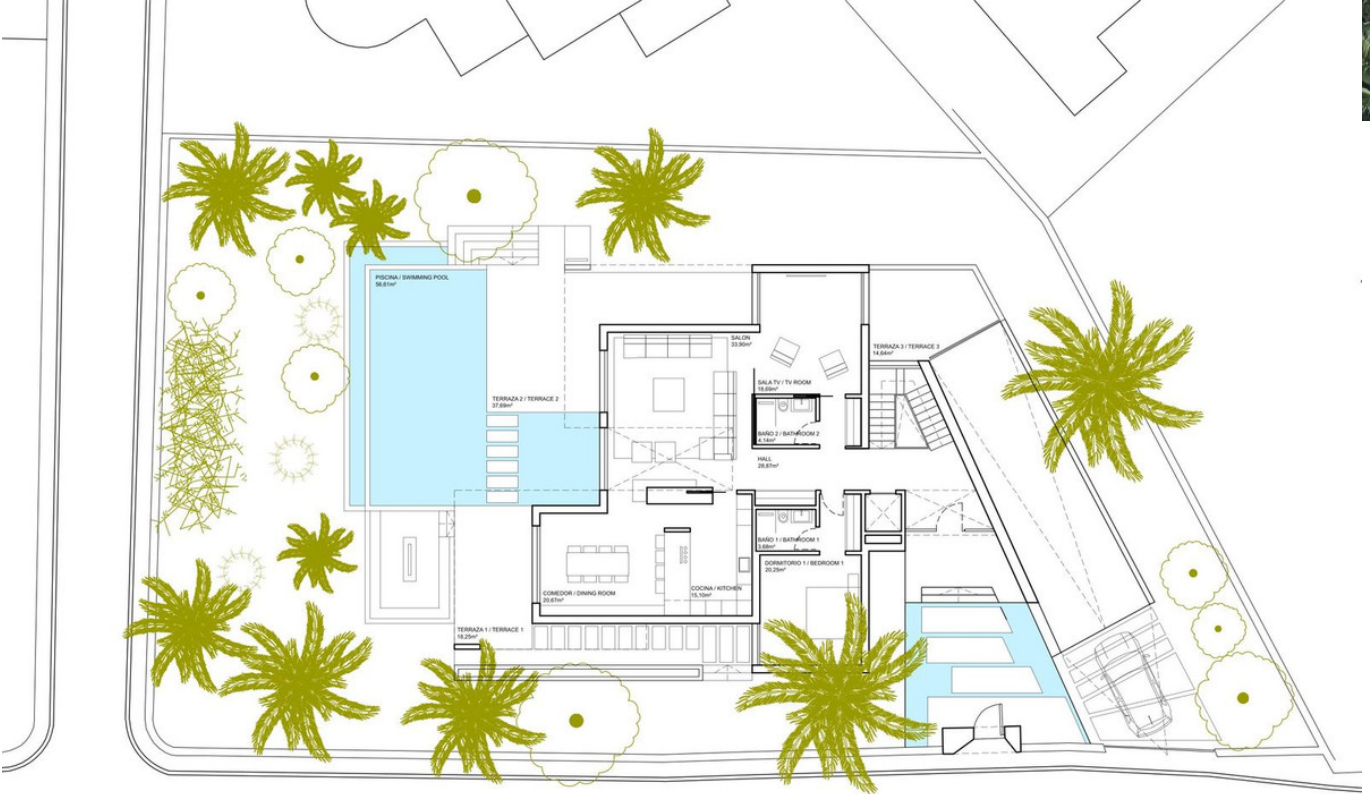








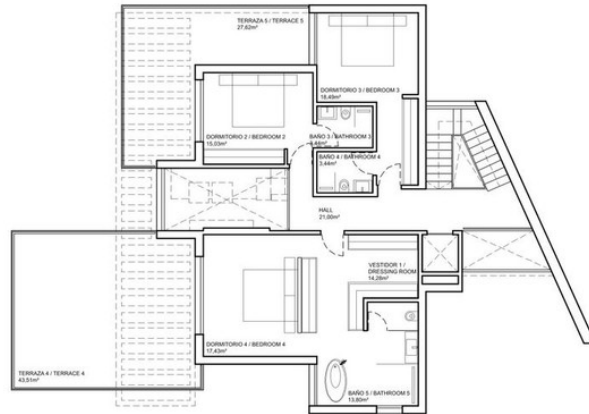




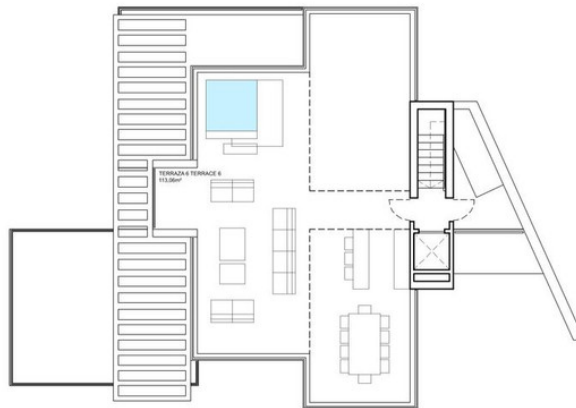
PLANTA BAJA / GROUND FLOOR

CALLE ALHAMBRA



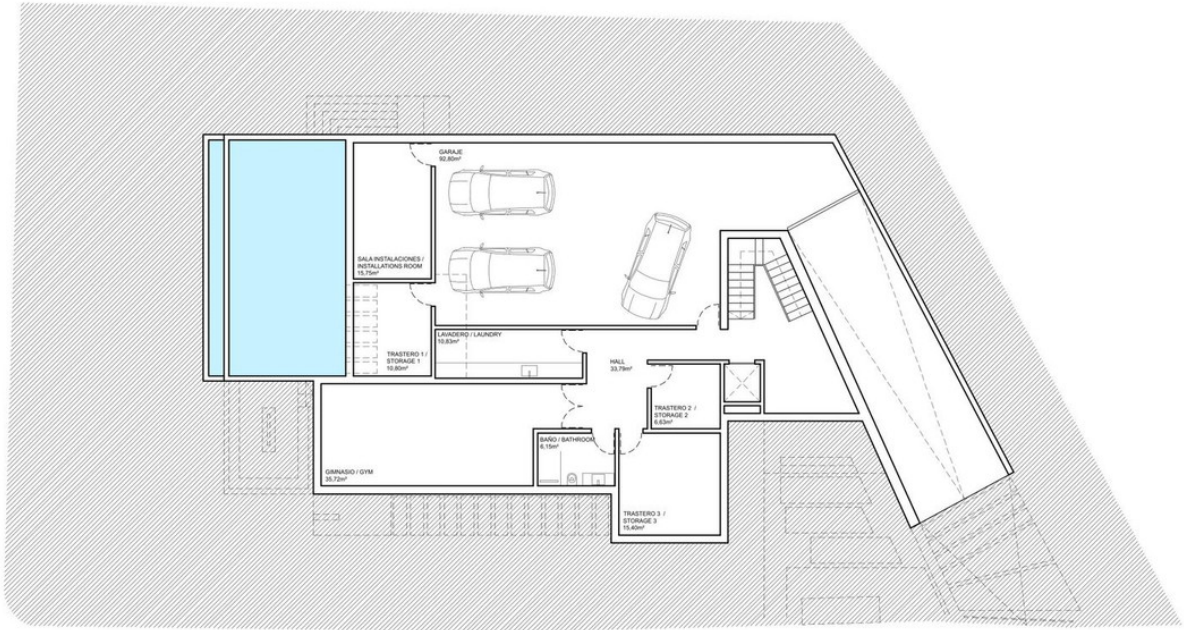


PLANTA ALTA / FIRST FLOOR



PLANTA TERRAZA / TERRACE FLOOR





PLANTA SOTANO / BASEMENT FLOOR